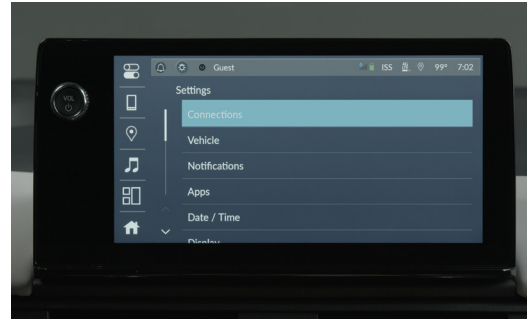


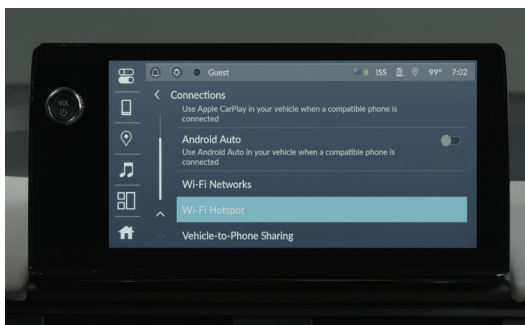
How to Connect to the Wi-Fi® Hotspot



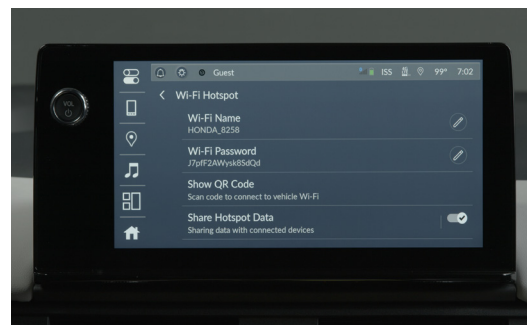
1 First, touch the Settings icon on the color touch-screen home screen.



2 Next, touch Connections.



3 Select Wi-Fi Hotspot.



4 The system displays the Wi-Fi name and password that can be manually entered on the mobile device to join the network.



5 Or users can touch Show QR Code, scan the code with their device, and be prompted to join the network with just a tap.

See your vehicle's Owner's Manual for even more details. You can download one at mygarage.honda.com.