



	Smart Entry	Walk Away Auto Lock®	Audio Systems	SiriusXM® Satellite Radio	Media Device Ports	Bluetooth® HandsFreeLink®	Adaptive Cruise Control	Lane Keep Assist
Sport, RTL	•	•	Display Audio		•	•	•	•
RTL-E, Black Edition	•	•	Display Audio	•	•	•	•	•

Let's personalize your vehicle.

Your vehicle has many customized settings, refer to your Owner's Guide or Owner's Manual to see them in more detail.

AUTO DOOR LOCK: *When do the doors and trunk automatically lock? (All models)*

With Vehicle Speed Doors and trunk lock when vehicle speed reaches approximately 10 mph.

Shift From P Doors and trunk lock when transmission is shifted out of Park (P).

OFF Auto door lock function deactivated.

AUTO DOOR UNLOCK: *When do the doors and trunk automatically unlock? (All models)*

All Doors When Driver's Door Opens Doors and trunk unlock when driver's door is opened.

All Doors With Shift to Park Doors and trunk unlock when transmission is shifted to Park (P).

All Doors With IGN Off Doors and trunk unlock when power mode is set to VEHICLE OFF (LOCK).

OFF Auto door-unlock function deactivated.

KEY AND REMOTE UNLOCK MODE SETTINGS: *Which doors unlock on first push of the remote? (All models)*

Driver Door All Doors

DOOR UNLOCK MODE: *Changes which doors unlock when you grab the driver's door handle. (All models)*

Driver Door Only All Doors

TAILGATE POWER LOCKING: *Changes the setting for the tailgate locking feature. (All models)*

Enable Disable

REMOTE TRANSMITTER* SETTINGS: *Store a separate driver's seat (except for power lumbar) position and door mirror positions into each of the two Remote Transmitters. The seat automatically adjusts when the vehicle is turned on. (RTL-E & Black Edition)*

Program Transmitter 1 Program Transmitter 2

***Explain to customer they may experience interference due to proximity of mobile device to remote transmitter.**

RADIO PRESETS: *Show the customer how to store a station.*

- Use the TUNE, SEEK or SCAN function to tune to a desired station or channel.
- Pick a preset number button (1-6 or 7-12, as appropriate).
- Press and hold the button until you hear a beep.

ADAPTIVE CRUISE CONTROL (ACC) FORWARD VEHICLE DETECT BEEP: *Select whether the ACC system beeps when it detects a vehicle or when a detected vehicle goes out of ACC range. (All models)*
Video available at hondatechtutor.com

On Off

LANE KEEPING ASSIST SYSTEM (LKAS) SUSPEND BEEP: *Select whether the system beeps when the LKAS is suspended. (All models)*
Video available at hondatechtutor.com

On A beep confirms each time the system suspends (does not detect lane markings). Off The system remains silent when it no longer detects lane markings.

FORWARD COLLISION WARNING DISTANCE: *Change the distance at which Collision Mitigation Braking System™ alerts. (All models)*
Video available at hondatechtutor.com

Long Normal Short

ROAD DEPARTURE MITIGATION (RDM) SETTING: *Change the setting for the RDM system. (All models)*
Video available at hondatechtutor.com

Normal Wide Warning Only

WALK AWAY AUTO LOCK®: *The vehicle automatically locks when you walk away with the smart entry remote. (All models)*

Enable Disable

AUDIO CONTROLS: *Show customer how to adjust the volume.*

APPLE CARPLAY® / ANDROID AUTO™: *Offer to plug customer's USB cable into the port and show how to activate. To help prevent any potential issues, be sure to use an Apple MFi Certified Lightning Connector for Apple Carplay®, and for Android Auto™, the USB cables should be certified by USB-IF to be compliant with USB 2.0 Standard.*

COMPATIBLE PHONE PAIRED: *Show customer how to pair a compatible phone.*

Note: SiriusXM® Radio will not function in Alaska, Puerto Rico or Hawaii.

AM _____

FM _____


SXM _____

FOR MORE INFORMATION

Owner's Guide located in glove box
Owner's Manual + Navigation Manual on website: owners.honda.com

Honda how-to videos available at: hondatechtutor.com
For frequently asked questions, try our Virtual Chat: <https://hondaweb.com/a2q/chat/?psw>

Honda Customer Service: 1-800-999-1009
[Twitter.com/HondaCustSvc](https://twitter.com/HondaCustSvc)
Technology Support: 1-888-528-7876



HondaLink® (RTL-E & Black Edition)
Honda app which provides access to your vehicle's information. For more information, visit hondalink.com

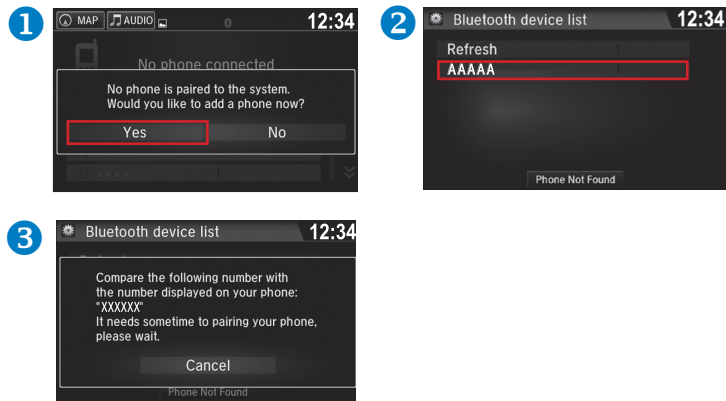
Customer's Name: _____ Initials _____ VIN#: _____
Sales Consultant/Delivery Specialist _____ Date: _____

Getting Started: Basic Features and Functions

BLUETOOTH® HANDSFREELINK® PAIRING

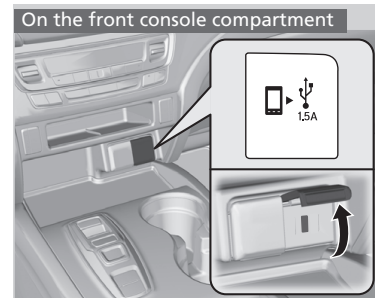
Wirelessly connects your compatible cell phone to the vehicle's audio system, allowing for hands-free phone call operation. Turn on your phone's Bluetooth® and make sure it's in discovery mode. The vehicle must be stopped during the entire pairing process.

Display Audio Pairing – Press Settings, then Phone



MEDIA DEVICE PORTS

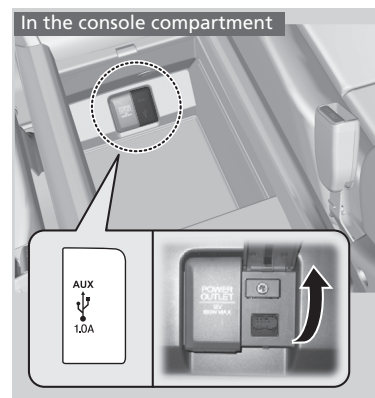
Allows connection of your compatible mobile device to your vehicle. Functionality ranges from playing media, charging devices, and connecting to available Apple CarPlay® or Android Auto™.



ON THE FRONT CONSOLE COMPARTMENT

The USB port (1.5A) is for:

- Charging devices
- Playing audio files
- Connecting compatible phones with Apple CarPlay® or Android Auto™



IN THE CONSOLE COMPARTMENT

The USB port (1.0A) is for:

- Playing audio files on a USB flash drive
- Connecting a cellular phone
- Charging devices



ON THE BACK OF THE CONSOLE COMPARTMENT (RTL-E & Black Edition)

The USB ports (2.5A) are for:

- Charging devices

AUDIO SYSTEM CONTROLS

Your vehicle comes with one of two great-sounding audio systems.

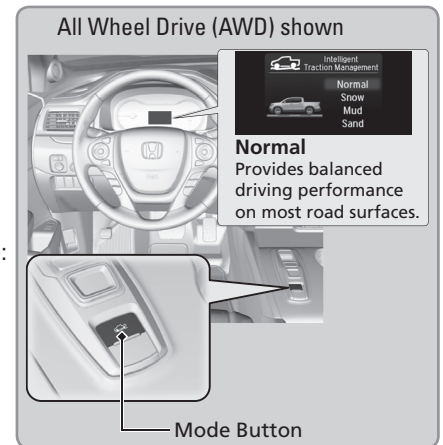


- **SOURCE button:** Cycle through available audio modes.
- **+ / - buttons:** Adjust audio volume.
- **◀ / ▶ buttons:** Change presets, tracks, or folders.
- **☰ button:** Display menu items for the current audio mode.
- **⏻ Power Button**
- **☀ / 🌙 Day/Night button** - Change the audio/information screen brightness.

INTELLIGENT TRACTION MANAGEMENT

The Intelligent Traction Management system optimizes vehicle performance to help you drive on various surfaces. Press the mode button to select the appropriate mode: **Normal, Snow, Mud*, or Sand***

***Available on All Wheel Drive (AWD) models only**

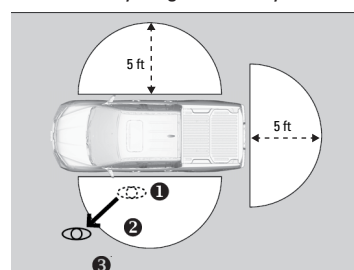


TAILGATE AND TRUNK OPERATION

- To drop open the tailgate, pull up the upper handle. Make sure to hold the tailgate until it is fully opened.
- To swing open the tailgate, pull up the lower handle.
- To open the trunk, unlock the doors, then pull up on the trunk release button. Or, insert the key into the trunk lock cylinder.
- The trunk main switch in the glove box disables the trunk release button.

WALK AWAY AUTO LOCK®

Automatically locks vehicle when you walk away while carrying the smart entry remote. Especially useful when your hands are full or if you accidentally forget to lock your vehicle.



Follow the steps in the diagram:

1. Exit vehicle, close all doors and trunk, then stay close and listen for a beep indicating the system is activated.
2. Walk at least 5 feet away.
3. Listen for a beep and look for the lights to flash, which confirm the doors and trunk are locked.

If you hear multiple beeps in quick succession, this is an indication that the auto lock function did not activate. Check the following:

1. Make sure the smart entry remote is not in the vehicle.
2. All doors, trunk, and tailgate must be completely closed prior to walking away.

Note: You may experience interference due to proximity of mobile device.