

	Smart Entry	Walk Away Auto Lock®	Audio Systems	SiriusXM® Satellite Radio	Media Device Ports	Bluetooth® HandsFreeLink®	Rear Entertainment System (RES)	Honda Sensing® Features	
								Adaptive Cruise Control	Lane Keep Assist
LX			Color Audio		•	•		•	•
EX	•	•	Display Audio	•	•	•		•	•
EX-L	•	•	Display Audio	•	•	•	• (EXL-NR*)	•	•
Touring, Elite, Black Edition	•	•	Display Audio	•	•	•	•	•	•

**Let's personalize your vehicle.**

\*NR=Equipped with Navigation and Rear Entertainment System

Your vehicle has many customized settings, refer to your Owner's Guide or Owner's Manual to see them in more detail.

**AUTO DOOR LOCK:** *When do the doors and tailgate automatically lock? (All models)*

With Vehicle Speed      Doors and tailgate lock when vehicle speed reaches approximately 10 mph.

Shifting From Park (Smart Entry Only)      Doors and tailgate lock when transmission is shifted out of Park (P).

OFF      Auto door lock function deactivated.

**AUTO DOOR UNLOCK:** *When do the doors and tailgate automatically unlock? (All models)*

All Doors When Driver's Door Opens      Doors and tailgate unlock when driver's door is opened.

All Doors When Shifted to Park      Doors and tailgate unlock when transmission is shifted to Park (P).

All Doors When Ignition Switched Off (Smart Entry Only)      Doors and tailgate unlock when power mode is set to VEHICLE OFF (LOCK).

OFF      Auto door-unlock function deactivated.

**KEY AND REMOTE UNLOCK MODE SETTINGS:** *Which doors unlock on first push of the remote? (EX, EX-L, Touring, Elite, Black Edition)*

Driver Door       All Doors

**DOOR UNLOCK MODE (PART OF SMART ENTRY):** *Changes which doors unlock when you grab the driver's door handle. (EX, EX-L, Touring, Elite, Black Edition)*

Driver Door Or Tailgate       All Doors

**WALK AWAY AUTO LOCK®:** *The vehicle automatically locks when you walk away with the keyless access remote. (EX, EX-L, Touring, Elite, Black Edition)*

ENABLE       DISABLE

**RADIO PRESETS:** *Show the customer how to store a station.*

- Use the TUNE, SEEK or SCAN function to tune to a desired station or channel.
- Pick a preset number button (1-6 or 7-12, as appropriate).
- Press and hold the button until you hear a beep.

AM \_\_\_\_\_

**FORWARD COLLISION WARNING DISTANCE:** *Change the distance at which Collision Mitigation Braking System™ alerts. (All models) Video available at hondatechtutor.com*

LONG       NORMAL       SHORT

**ADAPTIVE CRUISE CONTROL (ACC) FORWARD VEHICLE DETECT BEEP:** *The ACC system beeps when it detects a vehicle or when a detected vehicle goes out of ACC range. (All models) Video available at hondatechtutor.com*

ON       OFF

**LANE KEEPING ASSIST SYSTEM (LKAS) SUSPEND BEEP:** *The system beeps when the LKAS is suspended. (All models) Video available at hondatechtutor.com*

ON      A beep confirms each time the system suspends (does not detect lane markings).       OFF      The system remains silent when it no longer detects lane markings.

**ROAD DEPARTURE MITIGATION (RDM) SETTING:** *Change the setting for the RDM system. (All models) Video available at hondatechtutor.com*

NORMAL       WIDE       WARNING ONLY

**POWER TAILGATE** (EX-L, Touring, Elite, Black Edition): *Show customer how to use.*

**APPLE CARPLAY® / ANDROID AUTO™** (EX, EX-L, Touring, Elite, Black Edition): *Offer to plug customer's USB cable into the port and show how to activate. To help prevent any potential issues, be sure to use an Apple MFi Certified Lightning Connector for Apple Carplay®, and for Android Auto™, the USB cables should be certified by USB-IF to be compliant with USB 2.0 Standard.*

**COMPATIBLE PHONE PAIRED:** *Show customer how to pair a compatible phone.*

**REMOTE TRANSMITTER:** *Explain to customer they may experience interference due to proximity of mobile device to remote transmitter.*

Note: SiriusXM® Radio will not function in Alaska, Puerto Rico or Hawaii.

FM \_\_\_\_\_

FM \_\_\_\_\_

SXM \_\_\_\_\_

SXM \_\_\_\_\_

<p><b>FOR MORE INFORMATION</b></p> <p>Owner's Guide located in glove box Owner's Manual + Navigation Manual on website: <a href="http://owners.honda.com">owners.honda.com</a></p> <p>Honda how-to videos available at: <a href="http://hondatechtutor.com">hondatechtutor.com</a> and <a href="http://hondahowtovideos.com">hondahowtovideos.com</a> For frequently asked questions, try our Virtual Chat: <a href="https://hondaweb.com/a2q/chat/?psw">https://hondaweb.com/a2q/chat/?psw</a></p>	<p>Honda Customer Service: 1-800-999-1009 <a href="https://twitter.com/HondaCustSvc">Twitter.com/HondaCustSvc</a> Technology Support: 1-888-528-7876</p> <p> <b>HondaLink®</b> (EX, EX-L, Touring, Elite, Black Edition) Honda app which provides access to your vehicle's information. For more information, visit <a href="http://hondalink.com">hondalink.com</a></p>
---	--

Customer's Name: \_\_\_\_\_ Initials \_\_\_\_\_ VIN#: \_\_\_\_\_

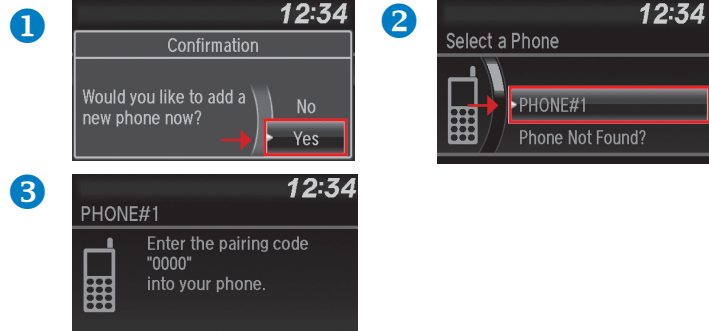
Sales Consultant/Delivery Specialist \_\_\_\_\_ Date: \_\_\_\_\_

## Getting Started: Basic Features and Functions

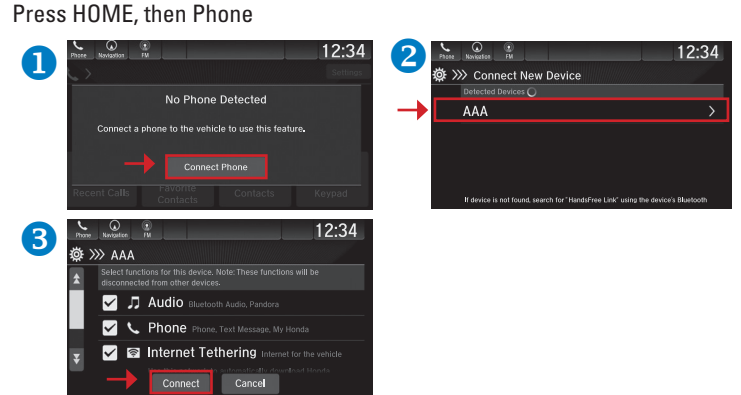
### BLUETOOTH® HANDSFREELINK® PAIRING

Wirelessly connects your compatible cell phone to the vehicle's audio system, allowing for hands-free phone call operation. Turn on your phone's *Bluetooth* and make sure it's in discovery mode. The vehicle must be stopped during the entire pairing process.

#### Color Audio Pairing (LX) – Press Phone Button



#### Display Audio Pairing (EX, EX-L, Touring, Elite, Black Edition) – Press HOME, then Phone



### MEDIA DEVICE PORTS

Allows connection of your compatible mobile device to your vehicle. Functionality ranges from playing media, charging devices, and connecting to available Apple CarPlay® or Android Auto™.

USB Ports	Front Console		Console Box	Rear (x2)
	1A	2.5A	2.5A	2.5A
LX	•		•	
EX		•	•	
EX-L, Touring, Elite, Black Edition		•	•	•
Play Media	•	•		
Charging	•	•	•	•
Apple CarPlay®/ Android Auto™		• (EX, EXL, Touring, Elite, Black Edition)		

### HANDS-FREE ACCESS POWER TAILGATE (Touring, Elite, Black Edition):

Use a forward and back kicking motion under the center of the rear bumper to open or close the power tailgate while carrying the remote transmitter.

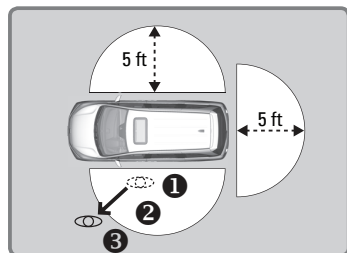
For best results:

- Do not stand too close to the bumper (approximately 2 feet away) when performing the kicking motion.
- The kicking motion should be performed in a quick, fluid motion (approximately 1 second in duration). If you hold your foot under the bumper for too long, the power tailgate does not open or close.
- The sensor **will not read** a side-to-side swiping/waving motion.

A beep sounds **after** the kicking motion has been performed properly as confirmation that the hands-free access has been activated.



Video available at [hondatechtutor.com](http://hondatechtutor.com)



### WALK AWAY AUTO LOCK®

(EX, EX-L, Touring, Elite, Black Edition)

Automatically locks vehicle when you walk away while carrying the remote transmitter. Especially useful when your hands are full or if you accidentally forget to lock your vehicle.

Follow the steps in the diagram:

- Exit vehicle, close all doors and tailgate, then stay close and listen for a beep indicating the system is activated.
- Walk at least 5 feet away.
- Listen for a beep and look for the lights to flash, which confirm the doors are locked.

**Note: You may experience interference due to proximity of mobile device.**

© 2019 American Honda Motor Co., Inc. All rights reserved. 12179 | To reorder free of charge, call Helm Inc. at (800) 782-4356. Reorder Y1225 07/2019

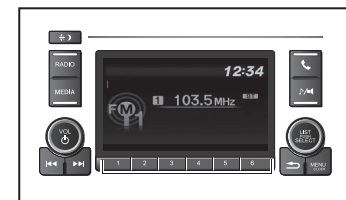
### AUDIO SYSTEM CONTROLS

Your vehicle comes with one of two great-sounding audio systems.

#### Color Audio (LX)



- SOURCE button:** Cycle through available audio modes.
- + / - buttons:** Adjust audio volume.
- ⏮ ⏭ buttons:** Select presets, stations, or songs.



- ⏻ Power Button/Volume Knob
- ☀/🌙 Day/Night Button
- ⏮ ⏭ Seek/Skip

#### Display Audio

(EX, EX-L, Touring, Elite, Black Edition)



- ▲/▼ buttons:** Cycle through available audio modes.
- + / - buttons:** Adjust audio volume.
- ⏮ ⏭ buttons:** Select presets or songs.



- ⏻ Power Button/Volume Knob
- ☀/🌙 Day/Night Button

### REAR ENTERTAINMENT SYSTEM (RES) (EX-L-NR\*, Touring, Elite, Black Edition)

\*NR=Equipped with Navigation and Rear Entertainment System

Rear seat passengers can enjoy a completely separate entertainment source than front passengers, including movies, games, and other audio choices.

The table below shows the possible audio source combinations of the front audio system and Blu-ray™ rear entertainment system's simultaneous use.

	Front	AM/FM Radio	SiriusXM® Radio	CD DVD*1 Blu-ray™*1	USB iPod
CD DVD*1 Blu-ray™*1		Yes	Yes	Yes	Yes
USB iPod		Yes	Yes	No	Yes
HDMI™*1		Yes	Yes	No	Yes

**Yes: Simultaneously playable.** When listening to the same source in both front and rear, the playing channel or track will also be the same for each.  
**No: Not Simultaneously playable**

\*1: The front seat passengers are only able to hear the DVD's Blu-ray™'s or HDMI™'s sound from the front speakers.