



	Smart Entry	Walk Away Auto Lock®	Audio Systems	SiriusXM® Satellite Radio	Media Device Ports	Bluetooth® HandsFreeLink®	Adaptive Cruise Control	Lane Keep Assist System	Forward Collision Warning	Road Departure Mitigation
Sport	•		Color Audio		•	•	•	•	•	•
EX-L	•	•	Display Audio	•	•	•	•	•	•	•
Touring	•	•	Display Audio	•	•	•	•	•	•	•
Elite	•	•	Display Audio	•	•	•	•	•	•	•

Let's personalize your vehicle.

Your vehicle has many customized settings, refer to your Owner's Guide or Owner's Manual to see them in more detail.

AUTO DOOR LOCK: *When do the doors and tailgate automatically lock? (All models)*

- With Vehicle Speed Doors and tailgate lock when vehicle speed reaches approximately 10 mph.
- Shift From Park Doors and tailgate lock when transmission is shifted out of Park (P).
- OFF Auto door lock function deactivated.

AUTO DOOR UNLOCK: *When do the doors and tailgate automatically unlock? (All models)*

- All Doors When Driver's Door Opens Doors and tailgate unlock when driver's door is opened.
- All Doors When Shifted to Park Doors and tailgate unlock when transmission is shifted to Park (P).
- All Doors When Ignition Switched Off Doors and tailgate unlock when power mode is set to VEHICLE OFF (LOCK).
- OFF Auto door-unlock function deactivated.

KEY AND REMOTE UNLOCK MODE SETTINGS: *Which doors unlock on first push of the remote? (All models)*

- Driver Door All Doors

DOOR UNLOCK MODE (PART OF SMART ENTRY): *Changes which doors unlock when you grab the driver's door handle. (All models)*

- Driver's Door Only All Doors

WALK AWAY AUTO LOCK®: *The vehicle automatically locks when you walk away with the keyless access remote. (EX-L, Touring, Elite)*

- Enable Disable

AUTO ENGINE IDLE STOP GUIDANCE SCREENS (Sport)/AUTO IDLE STOP DISPLAY (EX-L, Touring, Elite): *Select whether the engine idle stop guidance is displayed in the meter display (Sport). Select whether the Auto Idle Stop display comes on or not (EX-L, Touring, Elite).*

- ON OFF

RADIO PRESETS: *Show the customer how to store a station.*

- Use the TUNE, SEEK or SCAN function to tune to a desired station or channel.
- Pick a preset number button (1-6 or 7-12, as appropriate).
- Press and hold the button until you hear a beep.

ADAPTIVE CRUISE CONTROL (ACC) FORWARD VEHICLE DETECT BEEP: *The ACC system beeps when it detects a vehicle or when a detected vehicle goes out of ACC range. (All models)*
Video available at hondatechtutor.com

- ON OFF

LANE KEEPING ASSIST SYSTEM (LKAS) SUSPEND BEEP: *The system beeps when the LKAS is suspended. (All models)*
Video available at hondatechtutor.com

- ON OFF

FORWARD COLLISION WARNING DISTANCE: *Change the distance at which Collision Mitigation Braking System™ alerts. (All models)*
Video available at hondatechtutor.com

- Long Normal Short

ROAD DEPARTURE MITIGATION (RDM) SETTING: *Change the setting for the RDM system. (All models)* **Video available at hondatechtutor.com**

- Normal Wide Warning Only

POWER TAILGATE (EX-L, Touring, Elite): *Show customer how to use.*

APPLE CARPLAY® / ANDROID AUTO™ INTEGRATION (EX-L, Touring, Elite): *Offer to plug customer's USB cable into the port and show how to activate. To help prevent any potential issues, be sure to use an Apple MFi Certified Lightning Connector for Apple Carplay®, and for Android Auto™, the USB cables should be certified by USB-IF to be compliant with USB 2.0 Standard.*

COMPATIBLE PHONE PAIRED: *Show customer how to pair a compatible phone.*

REMOTE TRANSMITTER: *Explain to customer they may experience interference due to proximity of mobile device to remote transmitter*

Note: SiriusXM® Radio will not function in Alaska, Puerto Rico or Hawaii.

AM _____
FM _____
SXM _____

FOR MORE INFORMATION

Owner's Guide located in glove box
Owner's Manual + Navigation Manual on website: owners.honda.com

Honda how-to videos available at: hondatechtutor.com
For frequently asked questions, try our Virtual Chat: <https://hondaweb.com/a2q/chat/?psv>

Honda Customer Service: 1-800-999-1009
[Twitter.com/HondaCustSvc](https://twitter.com/HondaCustSvc)
Technology Support: 1-888-528-7876



HondaLink® (Touring, Elite) Honda app which provides access to your vehicle's information. For more information, visit hondalink.com

Customer's Name: _____ Initials _____ VIN#: _____

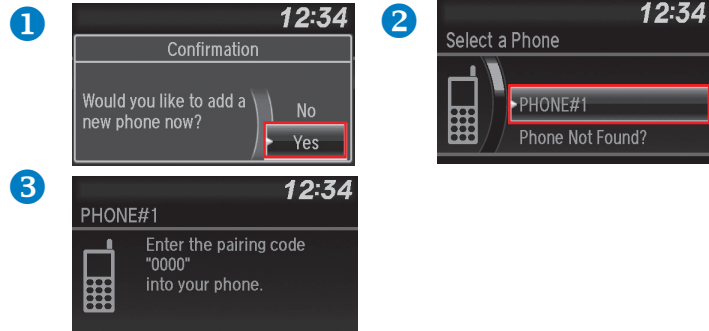
Sales Consultant/Delivery Specialist _____ Date: _____

Getting Started: Basic Features and Functions

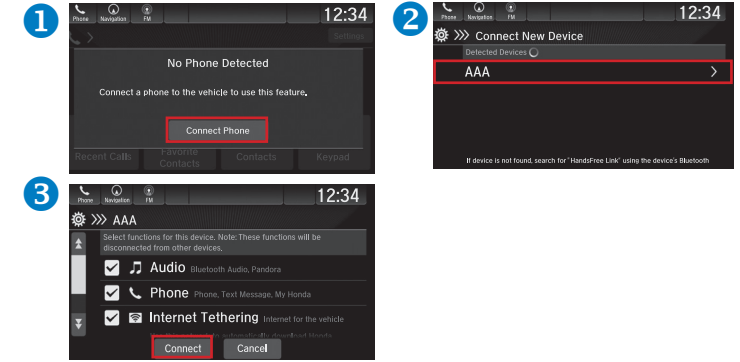
BLUETOOTH® HANDSFREELINK® PAIRING

Wirelessly connects your compatible cell phone to the vehicle's audio system, allowing for hands-free phone call operation. Turn on your phone's *Bluetooth* and make sure it's in discovery mode. The vehicle must be stopped during the entire pairing process.

Color Audio Pairing (Sport) – Press Phone Button



Display Audio Pairing (EX-L, Touring, Elite) – Press HOME, then Phone



MEDIA DEVICE PORTS

Allows connection of your compatible mobile device to your vehicle. Functionality ranges from playing media, charging devices, and connecting to available Apple CarPlay® or Android Auto™ integration.

USB Ports	Front Console		Charging Only	
	1A	2.5A	Console Box 2.5A	Rear (x2) 2.5A
Sport	•		•	
EX-L, Touring, Elite		•	•	•
Play Media	•	•		
Charging	•	•	•	•
Apple CarPlay® / Android Auto™		• (EXL, Touring, Elite)		

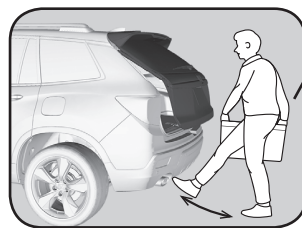
HANDS-FREE ACCESS POWER TAILGATE (Touring, Elite):

Use a forward and back kicking motion under the center of the rear bumper to open or close the power tailgate while carrying the remote transmitter.

For best results:

- Do not stand too close to the bumper (approximately 2 feet away) when performing the kicking motion.
- The kicking motion should be performed in a quick, fluid motion (approximately 1 second in duration). If you hold your foot under the bumper for too long, the power tailgate does not open or close.
- The sensor **will not read** a side-to-side swiping/waving motion.

A beep sounds and exterior lights flash **after** the kicking motion has been performed properly as confirmation that the hands-free access has been activated.



While carrying remote transmitter

Video available at hondatechtutor.com

ADAPTIVE CRUISE CONTROL (ACC)

Helps maintain a constant vehicle speed and a set following-interval behind a vehicle detected ahead of yours, without you having to keep your foot on the brake or the accelerator.

How to activate the system:

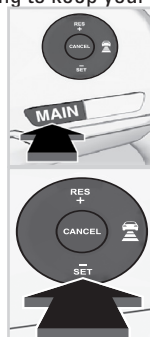
Press the **MAIN** button on the steering wheel.

To set the vehicle speed:

Take your foot off the pedal and press the **-/SET** button when you reach the desired speed. The moment you release the **-/SET** button, the set speed is fixed, and ACC begins.

To switch ACC to Cruise Control:

Press and hold the  (interval) button for one second. **Cruise Mode Selected** appears on the driver information interface for two seconds, and then the mode switches to Cruise.



AUDIO SYSTEM CONTROLS

Your vehicle comes with one of two great-sounding audio systems.

Color Audio (Sport)

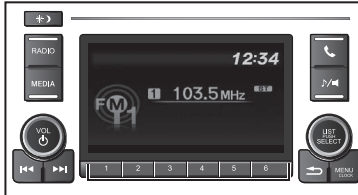





- **SOURCE button:** Cycle through available audio modes.
- **+ / - buttons:** Adjust audio volume.
- **⏮ ⏭ buttons:** Select presets, stations, or songs.

Display Audio (EX-L, Touring, Elite)



- **▲/▼ buttons:** Cycle through available audio modes.
- **+ / - buttons:** Adjust audio volume.
- **⏮ ⏭ buttons:** Select presets or songs.



-  Power Button/Volume Knob
-  Day/Night Button
-  Seek/Skip



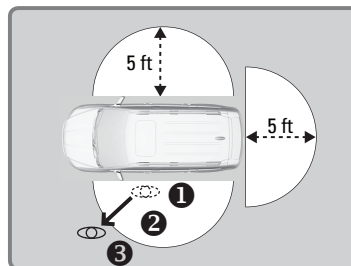
-  Power Button/Volume Knob
-  Day/Night Button

WALK AWAY AUTO LOCK® (EX-L, Touring, Elite)

Automatically locks vehicle when you walk away while carrying the remote transmitter. Especially useful when your hands are full or if you accidentally forget to lock your vehicle.

Follow the steps in the diagram:

1. Exit vehicle, close all doors and tailgate, then stay close and listen for a beep indicating the system is activated.
2. Walk at least 5 feet away.
3. Listen for a beep and look for the lights to flash, which confirm the doors are locked.



If you hear multiple beeps in quick succession, this is an indication that the auto lock function did not activate. Check the following:

1. Make sure the smart entry remote is not in the vehicle.
2. All doors and tailgate must be completely closed prior to walking away.

Note: You may experience interference due to proximity of mobile devices.