

	Smart Entry	Walk Away Auto Lock®	Bluetooth® HandsFreeLink®	Media Device Ports	Audio Systems	SiriusXM® Satellite Radio	Adaptive Cruise Control	Lane Keep Assist
LX			•	•	Color Audio			
EX	•	•	•	•	Display Audio	•	•	•
EX-L	•	•	•	•	Display Audio	•	•	•
Touring, Elite	•	•	•	•	Display Audio	•	•	•

Let's personalize your vehicle

Your vehicle has many customizable settings. Refer to your Owner's Guide or Owner's Manual to see additional settings in more detail.

AUTO DOOR LOCK: When do the doors automatically lock? (LX, EX, EX-L, Touring, Elite)

- ☐ With Vehicle Speed Doors and tailgate lock when vehicle speed reaches approximately 10 mph.
- ☐ Shift From P Doors and tailgate lock when the transmission is shifted out of Park (P).
- ☐ OFF Auto door lock function deactivated.

AUTO DOOR UNLOCK: When do the doors automatically unlock? (LX, EX, EX-L, Touring, Elite)

- ☐ All Doors When Driver's Door Opens Doors and tailgate unlock when driver's door is opened.
- ☐ All Doors With Shift to P Doors and tailgate unlock when the transmission is shifted to Park (P).
- ☐ All Doors With Ignition Off Doors and tailgate unlock when power mode is set to VEHICLE OFF (LOCK).
- ☐ OFF Auto door-unlock function deactivated.

DOOR UNLOCK MODE (PART OF SMART ENTRY): Changes which doors unlock when you grab the driver's door handle. (EX, EX-L, Touring, Elite)

- ☐ Driver Door or Tailgate ☐ All Doors

KEY AND REMOTE UNLOCK MODE SETTINGS: Which doors unlock on first push of the remote? (LX, EX, EX-L, Touring, Elite)

- ☐ Driver Door Only ☐ All Doors

WALK AWAY AUTO LOCK: Select whether the vehicle automatically locks when you walk away with the keyless access remote. (EX, EX-L, Touring, Elite)

- ☐ Enable ☐ Disable

ADAPTIVE CRUISE CONTROL (ACC) FORWARD VEHICLE DETECT BEEP:

Select whether the ACC system beeps when it detects a vehicle or when a detected vehicle goes out of ACC range. (EX, EX-L, Touring, Elite)

Video available at hondatechtutor.com

- ☐ ON ☐ OFF

LANE KEEPING ASSIST SYSTEM (LKAS) SUSPEND BEEP: Select whether the system beeps when the LKAS is suspended. (EX, EX-L, Touring, Elite)

Video available at hondatechtutor.com

- ☐ ON A beep confirms each time the system suspends (does not detect lane markings).
- ☐ OFF The system remains silent when it no longer detects lane markings.

FORWARD COLLISION WARNING DISTANCE: Change the distance at which Collision Mitigation Braking System™ alerts. (EX, EX-L, Touring, Elite)

Video available at hondatechtutor.com

- ☐ LONG ☐ NORMAL ☐ SHORT

ROAD DEPARTURE MITIGATION (RDM) SETTING: Change the setting for the RDM system. (EX, EX-L, Touring, Elite)

Video available at hondatechtutor.com

- ☐ NORMAL ☐ WIDE ☐ WARNING ONLY

REMOTE TRANSMITTER SETTINGS*: Store a separate driver's seat and outside mirror setting into each of the two Remote Transmitters. The seat automatically adjusts when the vehicle is turned on. (EX-L, Touring, Elite)

- ☐ Program Transmitter 1 ☐ Program Transmitter 2

*May experience interference due to proximity of mobile device.

- ☐ COMPATIBLE PHONE PAIRED: Show customer how to pair compatible phone.

- ☐ AUDIO CONTROLS: Show customer how to use the steering wheel and in-dash audio controls.

- ☐ APPLE CARPLAY® / ANDROID AUTO™ (EX, EX-L, Touring, Elite): Offer to plug customer's USB cable into the port and show how to activate. To help prevent any potential issues, be sure to use an Apple MFi Certified Lightning Connector for Apple Carplay®, and for Android Auto™, the USB cables should be certified by USB-IF to be compliant with USB 2.0 Standard.

RADIO PRESETS: Show the customer how to store a station.

Note: SiriusXM® Radio will not function in Alaska, Puerto Rico or Hawaii.

1. Use the TUNE, SEEK or SCAN function to tune to a desired station or channel.
2. Pick a preset number button (1-6 or 7-12, as appropriate).
3. Press and hold the button until you hear a beep.

AM _____
FM _____
SXM _____

FOR MORE INFORMATION

Owner's Guide located in glove box
Owner's Manual + Navigation Manual on website: owners.honda.com

Honda how-to videos available at: hondatechtutor.com
For frequently asked questions, try our Virtual Chat: <https://hondaweb.com/a2q/chat/?psw>

Honda Customer Service: 1-800-999-1009

[Twitter.com/HondaCustSvc](https://twitter.com/HondaCustSvc)

Technology Support: 1-888-528-7876



HondaLink® (EX, EX-L, Touring, Elite)
Honda app which provides access to your vehicle's information. For more information, visit hondalink.com

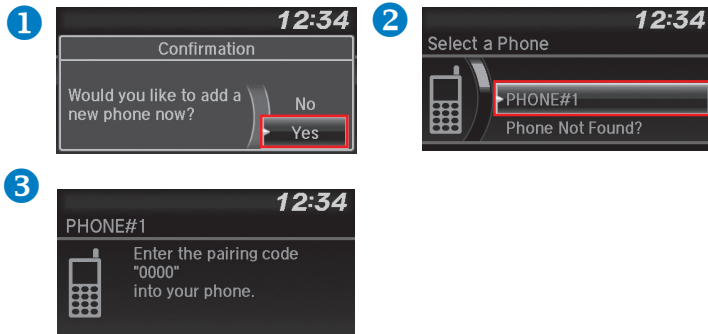
Customer's Name: _____ Initials: _____ VIN#: _____

Sales Consultant/Delivery Specialist: _____ Date: _____

BLUETOOTH® HANDSFREELINK® AND VOICE COMMAND SYSTEM

Wirelessly connects your compatible cell phone to the vehicle's audio system, allowing for hands-free phone call operation. Turn on your phone's *Bluetooth®* and make sure it's on discovery mode.

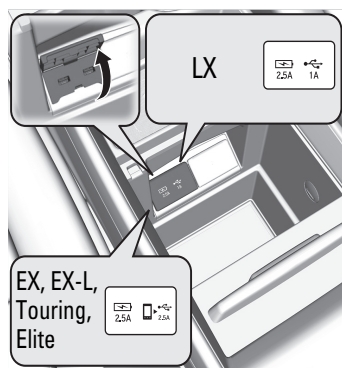
Color Audio Pairing (LX) – Press Phone Button



MEDIA DEVICE PORTS

Allows connection of your compatible mobile device to your vehicle. Functions range from playing media, charging devices, and connecting to available Apple CarPlay® or Android Auto™.

Console

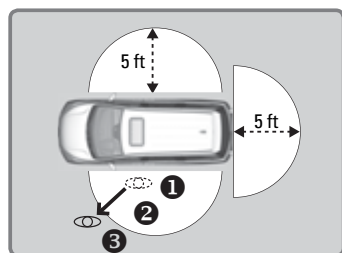


Console rear

(EX-L, Touring, Elite)



Center Console USB Ports	Inside			Rear
	1.0A	2.5A	2.5A	2.5A
Color Audio (LX)	1	1		
Display Audio (EX)		1	1	
Display Audio (EX-L, Touring, Elite)		1	1	2
Functions	Charging Play Media	Quick Charging	Quick Charging Play Media Android Auto™ Apple CarPlay®	Quick Charging



WALK AWAY AUTO LOCK®

(EX, EX-L, Touring, Elite)

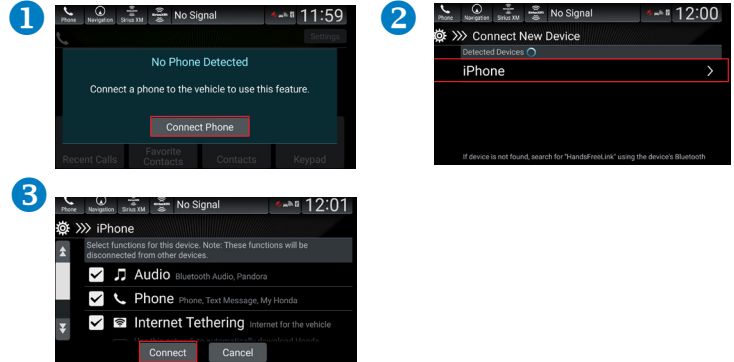
Automatically locks vehicle when you walk away while carrying the remote transmitter. Especially useful when your hands are full or if you accidentally forget to lock your vehicle.

The fuel-fill door auto-locks as well, so ensure the vehicle is unlocked before you begin refueling.

Follow the steps in the diagram:

- Exit vehicle, close all doors and trunk/hatch then stay close and listen for the beep indicating the system is activated.
- Walk at least 5 feet away.
- Listen for the beep and look for the lights to flash which confirms the doors are locked.

Display Audio Pairing (EX, EX-L, Touring, Elite) – Press Settings, then Phone



AUDIO SYSTEM CONTROLS

Your vehicle comes with one of two great-sounding audio systems.

Color Audio (LX)



- SOURCE button:** Cycle through available audio modes.
- + / - bar:** Press the ends of the bar to adjust audio volume.
- ⏮ / ⏭ buttons:** Change presets, tracks, albums, or folders.

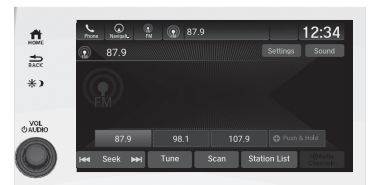


- ⏮ ⏭ Seek/Skip**
- ⏻ Power Button**
- * Day/Night Button**

Display Audio (EX, EX-L, Touring, Elite)



- ▲ / ▼ buttons:** Press until the audio screen is displayed in the Driver Information Interface.
- + / - buttons:** Adjust volume.
- ⏮ / ⏭ buttons:** Change presets, tracks, albums, or folders.



- HOME Home Button**
- BACK Back Button**
- * Day/Night Button (on top)**

HANDS-FREE ACCESS POWER TAILGATE (Touring, Elite):

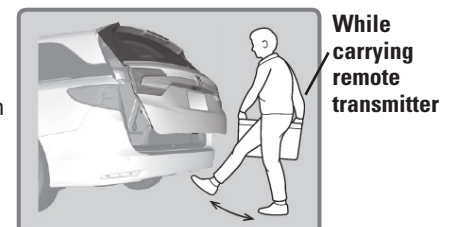
Use a forward and back kicking motion under the center of the rear bumper to open or close the power tailgate while carrying the remote transmitter.

For best results:

- Do not stand too close to the bumper (approximately 2 feet away) when performing the kicking motion.
- The kicking motion should be performed in a quick, fluid motion (approximately 1 second in duration). If you hold your foot under the bumper for too long, the power tailgate does not open or close.
- The sensor **will not read** a side-to-side swiping/waving motion.

A beep sounds **after** the kicking motion has been performed properly as confirmation that the hands-free access has been activated.

Video available at
hondatechtutor.com



EX, EX-L, Touring and Elite Additional Key Features

ODYSSEY



2020 ODYSSEY

Please ask customer which features they would like to learn about at delivery.

	CabinTalk™	CabinWatch™	CabinControl™	Honda Sensing®	Electric Parking Brake and Brake Hold	Magic Slide™ Seat	HondaLink®	System Updates
EX			<input type="checkbox"/>	<input type="checkbox"/>	<input type="checkbox"/>	<input type="checkbox"/>	<input type="checkbox"/>	<input type="checkbox"/>
EX-L	<input type="checkbox"/> (Navi/RES)		<input type="checkbox"/>	<input type="checkbox"/>	<input type="checkbox"/>	<input type="checkbox"/>	<input type="checkbox"/>	<input type="checkbox"/>
Touring, Elite	<input type="checkbox"/>	<input type="checkbox"/>	<input type="checkbox"/>	<input type="checkbox"/>	<input type="checkbox"/>	<input type="checkbox"/>	<input type="checkbox"/>	<input type="checkbox"/>

FOR MORE INFORMATION

Owner's Guide located in glove box

Owner's Manual + Navigation Manual on website: owners.honda.com

Honda how-to videos available at: hondatechtutor.com

For frequently asked questions, try our Virtual Chat: <https://hondaweb.com/a2q/chat/?psw>

Honda Customer Service: 1-800-999-1009

[Twitter.com/HondaCustSvc](https://twitter.com/HondaCustSvc)

Technology Support: 1-888-528-7876



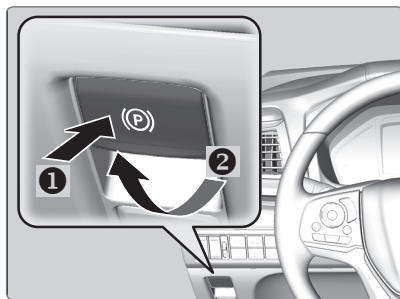
HondaLink® (EX, EX-L, Touring, Elite)

Honda app which provides access to your vehicle's information. For more information, visit hondalink.com

☐ Electric Parking Brake

(LX, EX, EX-L, Touring, Elite) Takes the place of a traditional parking brake.

Video available at hondatechtutor.com



1. To apply: Push the switch.

2. To release: Press the brake pedal **and make sure your seat belt is fastened**. Pull the switch up to release. Or, release by lightly pressing the accelerator pedal while the vehicle is in gear.

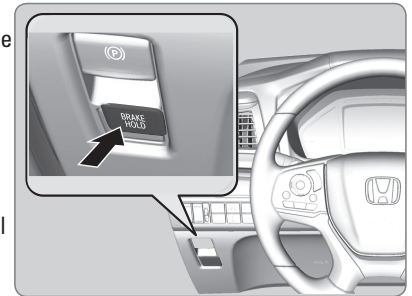
☐ Automatic Brake Hold

(LX, EX, EX-L, Touring, Elite) Use brake hold to make stop-and-go driving easier. It maintains rear brake hold even after the brake pedal is released.

Video available at hondatechtutor.com

To activate: Press the Brake Hold button. With the transmission in Drive (D) or Neutral (N), press the brake pedal and come to a complete stop. The HOLD indicator appears, and brake hold is applied. Release the brake pedal. Press the accelerator pedal to cancel brake hold and start moving. This feature remains on until deactivated or until the vehicle is turned off.

To deactivate: To turn off brake hold, press the brake pedal and press the BRAKE HOLD button again.



☐ Magic Slide™ Seat

(EX, EX-L, Touring, Elite) When the second-row outer seats are in slide (center) position, passengers have easier access to the third-row seats.

Video available at hondatechtutor.com

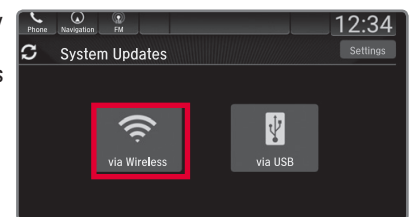


1. Remove the second-row center seat.
2. Pull up the handle at the side of the second-row outer seat, then push or pull to slide the seat.

☐ System Updates

(EX, EX-L, Touring, Elite) Your Display Audio system can receive optional software updates through a wireless delivery system when connected to a WiFi network, or through the in-vehicle cellular network.

1. Once the wireless connection is established, select the System Update button on the audio display HOME screen
2. Select the via Wireless icon and the system will check for updates
3. If an update is available, the system will automatically download it to your vehicle, in preparation for installation
4. Select install now and the update will begin



If an exclamation mark is displayed over the System Updates button, a software update is available and ready to be installed.

Your vehicle is designed to automatically check for software updates whenever you visit your local Honda dealer.

For updating via USB, see the Owner's Manual.

Video available at hondatechtutor.com

☐ CabinWatch®

(Touring, Elite) Monitors passengers in the second and third rows via the Display Audio screen. Drag and zoom to focus on a particular area.

Video available at hondatechtutor.com

☐ CabinTalk®

(EX-L with Navi/RES, Touring, Elite) Broadcasts your voice to passengers in the second and third rows via the rear speakers or headphones.

Video available at hondatechtutor.com

☐ CabinControl™

(EX, EX-L, Touring, Elite) CabinControl is a downloadable app which allows passengers to turn their smartphone into a remote to control the rear entertainment and comfort by actively:

- Controlling audio modes
- Streaming music from individual devices to create a shared Social Playlist for everyone in the vehicle to enjoy
- Controlling the rear AC
- Sending directions to the navigation system
- Selecting rear seat entertainment including apps and movies

Download and install CabinControl™ from the App Store or Google Play.

Video available at hondatechtutor.com

☐ Blu-ray/DVD Rear Entertainment System

(EX-L-Navigation & Rear Entertainment System, Touring, Elite) Rear seat passengers can enjoy a completely separate entertainment source than front passengers, including movies, games and other audio choices.

Video available at hondatechtutor.com

☐ HondaLink®

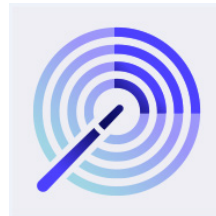
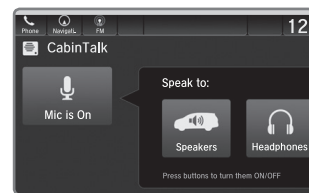
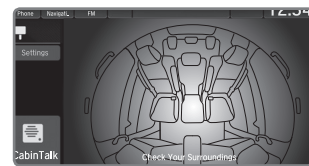
(EX, EX-L, Touring, Elite) Downloadable Honda app which provides access to your vehicle's information through your smartphone. For more information, visit hondalink.com.

Benefits (EX, EX-L, Touring and Elite):

- Easy way to schedule your next service appointment
- Notifications from Honda
- Check the mileage, fuel range, and oil life from your app

Additional benefits with services subscription (Touring and Elite):

- Destination download to navigation system
- Automatic Collision Notification
- Remote Start
- Remote Door Lock/Unlock
- Geofence Alert
- Security Alarm Alert
- Speed Alert
- Concierge



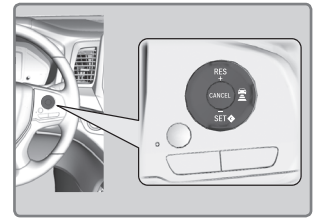
Honda Sensing® Safety and Driver Assistance Technologies

(EX, EX-L, Touring, Elite) For more information, see your Owner's Guide.

☐ Adaptive Cruise Control (ACC)

Helps maintain a constant vehicle speed and a set following interval behind a vehicle detected ahead of yours.

Video available at hondatechtutor.com



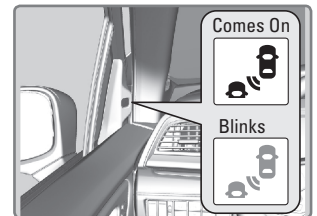
☐ Blind Spot Information (BSI) System

Alerts you to a detected vehicle in your left or right blind spot when your vehicle speed is 20 mph (32 km/h) or higher.

When a vehicle is detected in your blind spot, the blind spot indicator turns on and stays on until the area is clear.

When your turn signal is on and a vehicle is detected, the blind spot indicator blinks and a beep sounds until the area is clear or the turn signal is off.

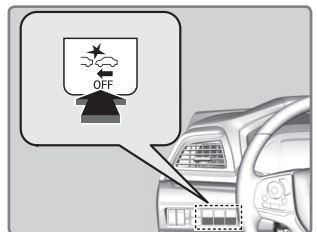
Video available at hondatechtutor.com



☐ Collision Mitigation Braking System™ (CMBS™)

Helps reduce the likelihood of a collision with a vehicle detected ahead, and the severity of an impact if the collision is unavoidable. Incorporates Forward Collision Warning (FCW).

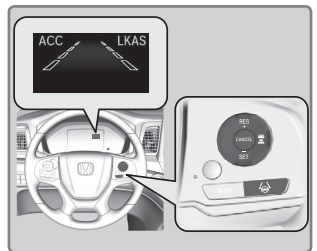
Video available at hondatechtutor.com



☐ Lane Keeping Assist System (LKAS)

Under certain circumstances, if you cross a detected lane line without using your turn signal, a message appears on the Driver Information Interface and the steering vibrates slightly.

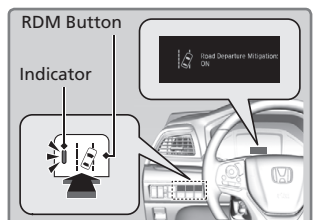
Video available at hondatechtutor.com



☐ Road Departure Mitigation (RDM)

Under certain circumstances, alerts and helps to assist you if the system determines a possibility of your vehicle unintentionally crossing over detected lane markings. Incorporates Lane Departure Warning (LDW) alert.

Video available at hondatechtutor.com



☐ Auto High-Beam System

Automatically changes the low beam headlights to high beam headlights, when necessary.

Video available at hondatechtutor.com

