

	Smart Entry	Walk Away Auto Lock®	Bluetooth® HandsFreeLink®	Media Device Ports	Audio Systems	SiriusXM® Satellite Radio	Adaptive Cruise Control	Lane Keeping Assist	Forward Collision Warning	Road Departure Mitigation
LX			•	•	Color Audio					
Sport			•	•	Display Audio					
EX, EX-L, Touring	•	•	•	•	Display Audio	•	•	•	•	•

**Let's personalize your vehicle**

Your vehicle has many customizable settings. Refer to your Owner's Guide or Owner's Manual to see them in more detail.

**AUTO DOOR LOCK:** *When do the doors automatically lock? (All models)*

With Vehicle Speed All doors and tailgate lock when vehicle speed reaches approximately 10 mph.

Shift from P (EX, EX-L, Touring Only) All doors and tailgate lock when the transmission is shifted out of Park (P).

OFF Auto door lock function deactivated.

**AUTO DOOR UNLOCK:** *When do the doors automatically unlock? (All models)*

All Doors When Driver's Door Opens All doors and tailgate unlock when driver's door is opened.

All Doors When Shifted to Park All doors unlock when the transmission is shifted to Park (P) with brake pedal depressed.

All Doors When Ignition Shifted OFF (EX, EX-L, Touring Only) Doors and tailgate unlock when power mode is set to VEHICLE OFF (LOCK).

OFF Auto door unlock function deactivated.

**KEY AND REMOTE UNLOCK MODE SETTINGS:** *Which doors unlock on first push of the remote? (EX, EX-L, Touring)*

Driver Door  All Doors

**HEADLIGHT AUTO OFF TIMER:** *Change the length of time the exterior lights stay on after you close the driver's door. (EX, EX-L, Touring)*

60 sec  30 sec  15 sec  0 sec

**WALK AWAY AUTO LOCK®:** *Select whether the vehicle automatically locks when you walk away with the smart entry remote. (EX, EX-L, Touring)*

ON  OFF

**RADIO PRESETS:** *Show the customer how to store a station.*

- Use the TUNE, SEEK or SCAN function to tune to a desired station or channel.
- Pick a preset number button (1-6 or 7-12, as appropriate).
- Press and hold the button until you hear a beep.

AM \_\_\_\_\_

**ADAPTIVE CRUISE CONTROL (ACC) FORWARD VEHICLE DETECT BEEP:** *Select whether the ACC system beeps when it detects a vehicle or when a detected vehicle goes out of ACC range. (EX, EX-L, Touring)*  
**Video available at hondatechtutor.com**

ON  OFF

**LANE KEEPING ASSIST SYSTEM (LKAS) SUSPEND BEEP:** *Select whether the system beeps when the LKAS is suspended. (EX, EX-L, Touring)*  
**Video available at hondatechtutor.com**

ON A beep confirms each time the system suspends (does not detect lane markings).  OFF The system remains silent when it no longer detects lane markings.

**FORWARD COLLISION WARNING DISTANCE:** *Change the distance at which Collision Mitigation Braking System™ alerts. (EX, EX-L, Touring)*  
**Video available at hondatechtutor.com**

LONG  NORMAL  SHORT

**ROAD DEPARTURE MITIGATION (RDM) SETTING:** *Change the setting for the RDM system. (EX, EX-L, Touring)*  
**Video available at hondatechtutor.com**

NARROW  NORMAL  WIDE  WARNING ONLY

**AUDIO CONTROLS:** *Show customer how to use the steering wheel and in-dash audio controls.*

**COMPATIBLE PHONE PAIRED:** *Show customer how to pair a compatible phone.*

**APPLE CARPLAY® / ANDROID AUTO™** (Sport, EX, EX-L, Touring): *Offer to plug customer's USB cable into the port and show how to activate. To help prevent any potential issues, be sure to use an Apple MFi Certified Lightning Connector for Apple Carplay®, and for Android Auto™, the USB cables should be certified by USB-IF to be compliant with USB 2.0 Standard.*

**REMOTE TRANSMITTER:** *Explain to customer they may experience interference due to proximity of mobile device to remote transmitter*

*Note: SiriusXM® Radio will not function in Alaska, Puerto Rico or Hawaii.*

FM \_\_\_\_\_  
FM \_\_\_\_\_  
SXM \_\_\_\_\_  
SXM \_\_\_\_\_

**FOR MORE INFORMATION**

Owner's Guide located in glove box  
Owner's Manual + Navigation Manual on website: [owners.honda.com](http://owners.honda.com)

Honda how-to videos available at: [hondatechtutor.com](http://hondatechtutor.com)  
For frequently asked questions, try our Virtual Chat: <https://hondaweb.com/a2q/chat/?psw>

**Honda Customer Service: 1-800-999-1009**

 [Twitter.com/HondaCustSvc](https://twitter.com/HondaCustSvc)

**Technology Support: 1-888-528-7876**



**HondaLink®** (Sport, EX, EX-L, Touring)  
Honda app which provides access to your vehicle's information. For more information, visit [hondalink.com](http://hondalink.com)

Customer's Name: \_\_\_\_\_ Initials: \_\_\_\_\_ VIN#: \_\_\_\_\_

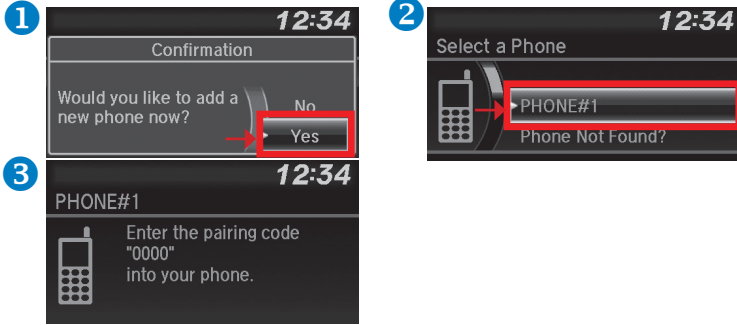
Sales Consultant/Delivery Specialist: \_\_\_\_\_ Initials: \_\_\_\_\_ Date: \_\_\_\_\_

## Getting Started: Basic Features and Functions

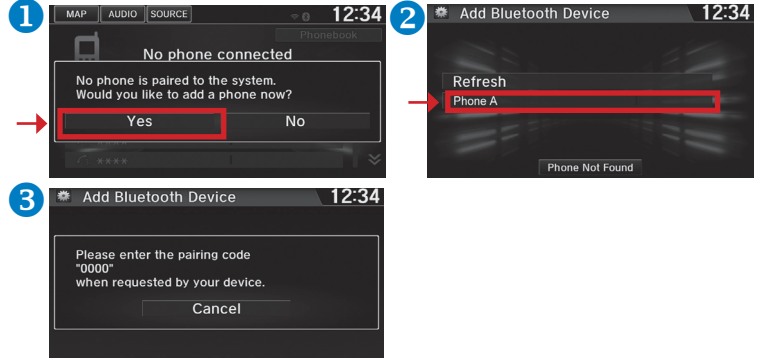
### BLUETOOTH® HANDSFREELINK® AND VOICE COMMAND SYSTEM

Wirelessly connects your compatible cell phone to the vehicle's audio system, allowing for hands-free phone call operation. Turn on your phone's Bluetooth® and make sure it's on discovery mode.

#### Color Audio Pairing (LX) – Press Phone Button

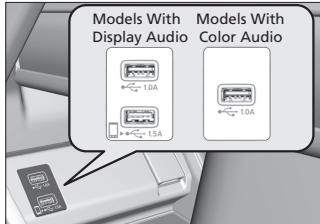


#### Display Audio Pairing (Sport, EX, EX-L, Touring) – Press Settings, then Phone



### MEDIA DEVICE PORTS

Allows connection of your mobile device to your vehicle. Functions range from playing audio, charging devices and connecting to Apple CarPlay® or Android Auto™.



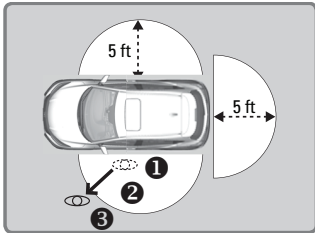
Front Console

USB Ports	1.0A (All models)	1.5A (Sport, EX, EX-L, Touring)
Color Audio (LX)	•	
Display Audio (Sport, EX, EX-L, Touring)	•	•
Functions	Charging	Quick Charging
	Play Audio	Play Audio Android Auto™ Apple CarPlay®

### WALK AWAY AUTO LOCK® (EX, EX-L, Touring)

Automatically locks vehicle when you walk away while carrying the remote transmitter. Especially useful when your hands are full or if you accidentally forget to lock your vehicle.

#### Follow the steps in the diagram:



- Exit vehicle, close all doors and tailgate, then stay close and listen for a beep indicating the system is activated.
- Walk at least 5 feet away.
- Listen for a beep and look for the lights to flash which confirms the doors are locked.

If you hear multiple beeps in quick succession, this is an indication that the auto lock function did not activate. Check the following:

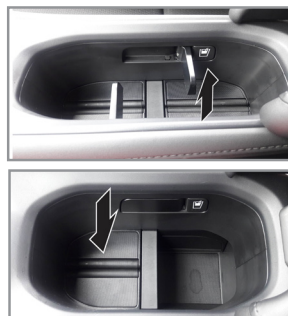
- Make sure the smart entry remote is not in the vehicle.
- All doors and tailgate must be completely closed prior to walking away.

**Note: You may experience interference due to proximity of mobile device.**

### BEVERAGE HOLDERS

The beverage holders in the center console can be adjusted to accommodate containers varying in size.

To accommodate a smaller beverage container, press the button on either side of the drink holder, and a divider will flip open. Push the divider back into place to return it to its original position.



Push down the bottom flaps to increase the depth, allowing for taller containers. Press the corresponding button to return the flaps to the horizontal position.

### AUDIO SYSTEM CONTROLS

Your vehicle comes with one of two great-sounding audio systems.

#### Color Audio (LX)



- SOURCE button:** Cycle audio modes.
- + / - buttons:** Adjust volume.
- ◀ / ▶ buttons:** Change presets, tracks, albums, or folders.

#### Display Audio (Sport, EX, EX-L, Touring)



- SOURCE button:** Cycle audio modes.
- + / - buttons:** Adjust volume.
- ◀ / ▶ buttons:** Change presets, tracks, albums, or folders.
- Display icon button:** Change the display.
- Menu icon button:** Display menu items for the current audio mode.

### ADAPTIVE CRUISE CONTROL (ACC) (EX, EX-L, Touring)

Helps maintain a constant vehicle speed and a set following-interval behind a vehicle detected ahead of yours, without you having to keep your foot on the brake or the accelerator.

#### How to activate the system:

Press the **MAIN** button on the steering wheel.

#### To set the vehicle speed:

Take your foot off the pedal and press down the **-/SET** button when you reach the desired speed. The moment you release the button, the set speed is fixed, and ACC begins.

#### To switch ACC to Cruise Control:

Press and hold the (interval) button for one second. **Cruise Mode Selected** appears on the multi-information display for two seconds, and then the mode switches to Cruise.



### ELECTRIC PARKING BRAKE (EPB)

Takes the place of a traditional parking brake.

**1. To apply:** Pull the switch up.

**2. To release:** Press the brake pedal and make sure your seat belt is fastened. Push the switch down to release.



Or, release by lightly pressing the accelerator pedal while the vehicle is in gear.