

	Smart Entry	Walk Away Auto Lock®	Bluetooth® HandsFreeLink®	Media Device Ports	Audio Systems	Adaptive Cruise Control	Lane Keep Assist	SiriusXM® Satellite Radio
LX			•	•	Color Audio			
Sport			•	•	Display Audio			
EX, EX-L	•	•	•	•	Display Audio	•	•	•

Let's personalize your vehicle

Your vehicle has many customizable settings. Refer to your Owner's Guide or Owner's Manual to see them in more detail.

AUTO DOOR LOCK: When do the doors automatically lock? (EX, EX-L)

- ☐ With Vehicle Speed Doors and hatchback lock when vehicle speed reaches approximately 10 mph.
- ☐ Shift From Park (Continuously Variable Transmission models only) Doors and hatchback lock when shift lever is moved out of Park (P).
- ☐ OFF Auto door lock function deactivated.

AUTO DOOR UNLOCK: When do the doors automatically unlock? (EX, EX-L)

- ☐ All Doors When Driver's Door Opens Doors and hatchback unlock when driver's door is opened.
- ☐ All Doors When Shifted to Park (Continuously Variable Transmission models only) Doors and hatchback unlock when shift lever is moved to Park (P).
- ☐ All Doors When Ignition Switched Off Doors and hatchback unlock when power mode is set to VEHICLE OFF (LOCK).
- ☐ OFF Auto door-unlock function deactivated.

KEY AND REMOTE UNLOCK MODE SETTINGS: Which doors unlock on first push of the remote? (EX, EX-L)

- ☐ Driver Door ☐ All Doors

DOOR UNLOCK MODE: Changes which doors unlock when you grab the driver's door handle. (EX, EX-L)

- ☐ Driver Door Only ☐ All Doors

WALK AWAY AUTO LOCK®: Select whether the vehicle automatically locks when you walk away with the smart entry remote. (EX, EX-L)

- ☐ ON ☐ OFF

RADIO PRESETS: Show the customer how to store a station.

1. Use the TUNE, SEEK or SCAN function to tune to a desired station or channel.
2. Pick a preset number button (1-6 or 7-12, as appropriate).
3. Press and hold the button until you hear a beep.

FORWARD COLLISION WARNING DISTANCE: Change the distance at which Collision Mitigation Braking System™ alerts. (EX, EX-L) Video available at hondatechtutor.com

- ☐ LONG ☐ NORMAL ☐ SHORT

ADAPTIVE CRUISE CONTROL (ACC) FORWARD VEHICLE DETECT BEEP: Select whether the ACC system beeps when it detects a vehicle or when a detected vehicle goes out of ACC range. (EX, EX-L) Video available at hondatechtutor.com

- ☐ ON ☐ OFF

LANE KEEPING ASSIST SYSTEM (LKAS) SUSPEND BEEP: Select whether the system beeps when the LKAS is suspended. (EX, EX-L) Video available at hondatechtutor.com

- ☐ ON A beep confirms each time the system suspends (does not detect lane markings). ☐ OFF The system remains silent when it no longer detects lane markings.

ROAD DEPARTURE MITIGATION (RDM) SETTING: Change the setting for the RDM system. (EX, EX-L) Video available at hondatechtutor.com

- ☐ NARROW ☐ NORMAL ☐ WIDE ☐ WARNING ONLY

AUDIO CONTROLS: Show customer how to use the steering wheel and in-dash audio controls.

COMPATIBLE PHONE PAIRED: Show customer how to pair a compatible phone.

APPLE CARPLAY® / ANDROID AUTO™ (Sport, EX, EX-L): Offer to plug customer's USB cable into the port and show how to activate. To help prevent any potential issues, be sure to use an Apple MFi Certified Lightning Connector for Apple Carplay®, and for Android Auto™, the USB cables should be certified by USB-IF to be compliant with USB 2.0 Standard.

REMOTE TRANSMITTER: Explain to customer they may experience interference due to proximity of mobile device to remote transmitter.

Note: SiriusXM® Radio will not function in Alaska, Puerto Rico or Hawaii.

AM _____
FM _____
SXM _____

FOR MORE INFORMATION

Owner's Guide located in glove box
Owner's Manual + Navigation Manual on website: owners.honda.com

Honda how-to videos available at: hondatechtutor.com and hondahowtovideos.com
For frequently asked questions, try our Virtual Chat: <https://hondaweb.com/a2q/chat/?psw>

Honda Customer Service: 1-800-999-1009

[Twitter.com/HondaCustSvc](https://twitter.com/HondaCustSvc)

Technology Support: 1-888-528-7876



HondaLink® Honda app which provides access to your vehicle's information. For more information, visit hondalink.com

Customer's Name: _____ Initials: _____ VIN#: _____

Sales Consultant/Delivery Specialist: _____ Initials: _____ Date: _____

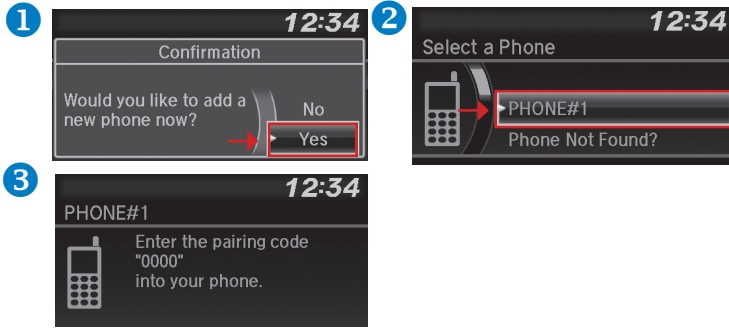
The information herein is believed to be accurate at time of printing. It is offered without warranty or assumption of responsibility by American Honda Motor Co., Inc.

Getting Started: Basic Features and Functions

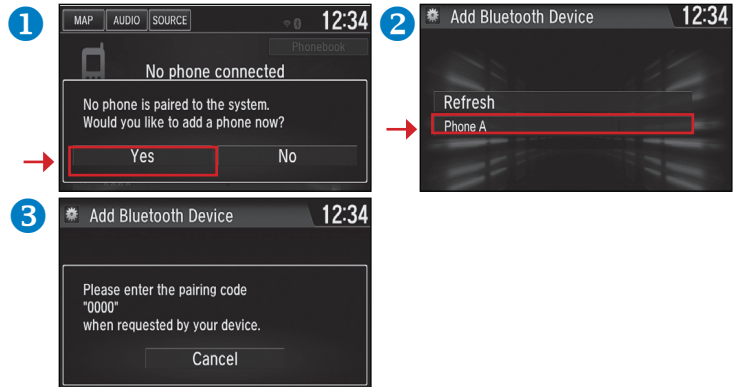
BLUETOOTH® HANDSFREELINK® AND VOICE COMMAND SYSTEM

Wirelessly connects your compatible cell phone to the vehicle's audio system, allowing for hands-free phone call operation. Turn on your phone's Bluetooth® and make sure it's on discovery mode.

Color Audio Pairing (LX) – Press Phone Button



Display Audio Pairing (Sport, EX, EX-L) – Press Settings, then Phone

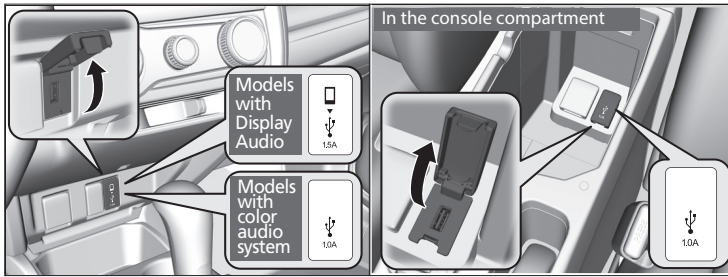


MEDIA DEVICE PORTS

Allows connection of your mobile device to your vehicle. Functions range from playing audio, charging devices and connecting to Apple CarPlay® or Android Auto™.

Front Console (All)

Center Console (Sport, EX, EX-L)



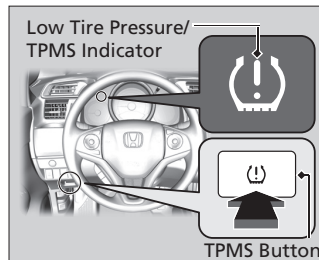
USB Ports	Front Console		Center Console
	1.5A	1.0A	1.0A
Color Audio (LX)		•	
Display Audio (Sport, EX, EX-L)	•		•
Functions	Quick Charging	Charging	Charging
	Play Audio		
	Android Auto™ Apple CarPlay®	Play Audio	Play Audio

TIRE PRESSURE MONITORING SYSTEM (TPMS) CALIBRATION

After you inflate, change, or rotate any of the tires, recalibrate the system.

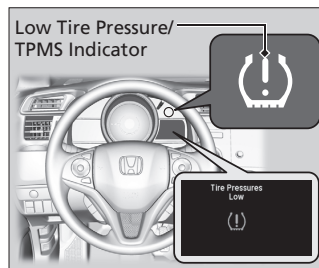
LX, Sport

- Press and hold the button until the indicator blinks twice.



EX, EX-L

- Press the / buttons to select Vehicle Settings, then press the SEL/RESET button.
- Press SEL/RESET button to select TPMS Calibration.
- Press the / button and select Calibrate, then press the SEL/RESET button.



The calibration process finishes automatically after about 30 minutes of cumulative driving at speeds between 30-60 mph.

AUDIO SYSTEM CONTROLS

Your vehicle comes with one of two great-sounding audio systems.

Color Audio (LX)



- SOURCE button:** Cycle audio modes.
- + / - buttons:** Adjust volume.
- ◀ / ▶ buttons:** Change presets, tracks, or folders.

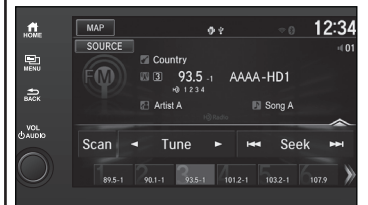


- ◀ ▶ buttons:** Seek/Skip
- VOLUME button:** Volume/Power Knob
- DAY/NIGHT button:** Day/Night Button

Display Audio (Sport, EX, EX-L)



- SOURCE button:** Cycle audio modes.
- + / - buttons:** Adjust volume.
- ◀ / ▶ buttons:** Change presets, tracks, or folders.
- LISTEN button:** Display menu items for the current audio mode.

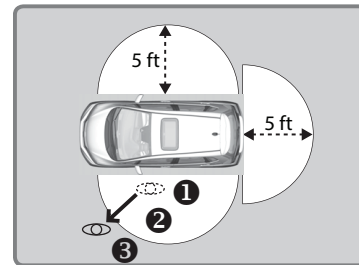


- VOLUME button:** Volume/Power Knob
- DAY/NIGHT button:** Day/Night Button

WALK AWAY AUTO LOCK® (EX, EX-L)

Automatically locks vehicle when you walk away while carrying the remote transmitter. Especially useful when your hands are full or if you accidentally forget to lock your vehicle.

The fuel-fill door auto-locks as well, so ensure the vehicle is unlocked before you begin refueling.



If you hear multiple beeps in quick succession, this is an indication that the auto lock function did not activate. Check the following:

- Make sure there are no smart entry remotes in the vehicle.
- All doors and tailgate must be completely closed prior to walking away.

Note: You may experience interference due to proximity of mobile device.