



	Smart Entry	Walk Away Auto Lock®	Bluetooth® HandsFreeLink®	Media Device Ports	Audio Systems	SiriusXM® Radio	Adaptive Cruise Control	Lane Keep Assist System	Forward Collision Warning	Road Departure Mitigation
LX			•	•	Color Audio		•	•	•	•
Sport	•	•	•	•	Display Audio		•	•	•	•
EX, EX-L	•	•	•	•	Display Audio	•	•	•	•	•
Touring	•	•	•	•	Display Audio	•	•	•	•	•
Si	•	•	•	•	Display Audio	•	•	•	•	•

**Let's personalize your vehicle**

Your vehicle has many customizable settings. Refer to your Owner's Guide or Owner's Manual to see them in more detail.

**AUTO DOOR LOCK:** *When do the doors automatically lock? (All models)*

With Vehicle Speed      Doors lock when vehicle speed reaches approximately 10 mph.

Shift From Park (Continuously Variable Transmission models only)      Doors lock when shift lever is moved out of Park (P).

OFF      Auto door lock function deactivated.

**AUTO DOOR UNLOCK:** *When do the doors automatically unlock? (All models)*

When Driver's Door Opens      All doors unlock when driver's door is opened.

When Shifting Into Park (Continuously Variable Transmission models only)      All doors unlock when shift lever is moved to Park (P).

When Ignition Switched Off      All doors unlock when power mode is set to VEHICLE OFF (LOCK).

OFF      Auto door-unlock function deactivated.

**KEY AND REMOTE UNLOCK MODE SETTINGS:** *Which doors unlock on first push of the remote? (All models)*

Driver Door       All Doors

**DOOR UNLOCK MODE:** *Changes which doors unlock when you grab the driver's door handle. (Sport, EX, EX-L, Touring, Si)*

Driver Door Only       All Doors

**WALK AWAY AUTO LOCK®:** *Select whether the vehicle automatically locks when you walk away with the smart entry remote. (Sport, EX, EX-L, Touring, Si)*

ON       OFF

**RADIO PRESETS:** *Show the customer how to store a station.*

1. Use the TUNE, SEEK or SCAN function to tune to a desired station or channel.

2. Pick a preset number button (1-6 or 7-12, as appropriate).

3. Press and hold the button until you hear a beep.

*Note: SiriusXM® Radio will not function in Alaska, Puerto Rico or Hawaii.*

AM \_\_\_\_\_

FM \_\_\_\_\_

SXM \_\_\_\_\_

**ADAPTIVE CRUISE CONTROL (ACC) FORWARD VEHICLE DETECT BEEP:** *Select whether the ACC system beeps when it detects a vehicle or when a detected vehicle goes out of ACC range. (All models) Video available at hondatechtutor.com*

ON       OFF

**LANE KEEPING ASSIST SYSTEM (LKAS) SUSPEND BEEP:** *Select whether the system beeps when the LKAS is suspended. (All models) Video available at hondatechtutor.com*

ON      A beep confirms each time the system suspends (does not detect lane markings).       OFF      The system remains silent when it no longer detects lane markings.

**FORWARD COLLISION WARNING DISTANCE:** *Change the distance at which Collision Mitigation Braking System™ alerts. (All models) Video available at hondatechtutor.com*

LONG       NORMAL       SHORT

**ROAD DEPARTURE MITIGATION (RDM) SETTING:** *Change the setting for the RDM system. (All models) Video available at hondatechtutor.com*

NORMAL       WIDE       WARNING ONLY

**AUDIO CONTROLS:** *Show customer how to use the steering wheel and in-dash audio controls*

**COMPATIBLE PHONE PAIRED:** *Show customer how to pair compatible phone*

**APPLE CARPLAY® / ANDROID AUTO™** (Sport, EX, EX-L, Touring, Si): *Offer to plug customer's USB cable into the port and show how to activate. Explain that extension cable is already installed. To help prevent any potential issues, be sure to use an Apple MFi Certified Lightning Connector for Apple Carplay®, and for Android Auto™, the USB cables should be certified by USB-IF to be compliant with USB 2.0 Standard.*

**REMOTE TRANSMITTER:** *Explain to customer they may experience interference due to proximity of mobile device to remote transmitter*

**HOOD:** *Show customer how to open the hood*

**FOR MORE INFORMATION**

Owner's Guide located in glove box  
Owner's Manual + Navigation Manual on website: [owners.honda.com](http://owners.honda.com)

Honda how-to videos available at: [hondatechtutor.com](http://hondatechtutor.com)  
For frequently asked questions, try our Virtual Chat: <https://hondaweb.com/a2q/chat/?psw>

**Honda Customer Service: 1-800-999-1009**  
[Twitter.com/HondaCustSvc](https://twitter.com/HondaCustSvc)  
**Technology Support: 1-888-528-7876**

**HondaLink® (Sport, EX, EX-L, Touring, Si)**  
 Honda app which provides access to your vehicle's information. For more information, visit [hondalink.com](http://hondalink.com)

Customer's Name: \_\_\_\_\_ Initials: \_\_\_\_\_ VIN#: \_\_\_\_\_

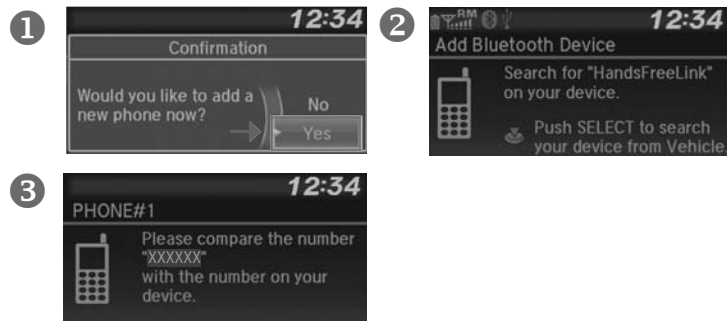
Sales Consultant/Delivery Specialist: \_\_\_\_\_ Initials: \_\_\_\_\_ Date: \_\_\_\_\_

## Getting Started: Basic Features and Functions

### BLUETOOTH® HANDSFREELINK® AND VOICE COMMAND SYSTEM

Wirelessly connects your compatible cell phone to the vehicle's audio system, allowing for hands-free phone call operation. Turn on your phone's *Bluetooth* and make sure it's in discovery mode. The vehicle must be stopped during the entire pairing process.

#### Color Audio Pairing (LX) – Press Phone Button



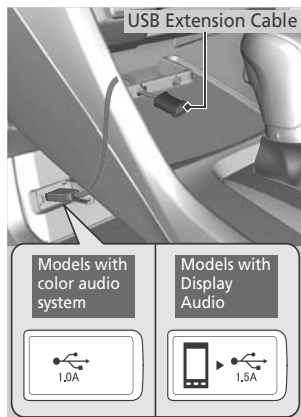
#### Display Audio Pairing (Sport, EX, EX-L, Touring, Si) – Press Phone



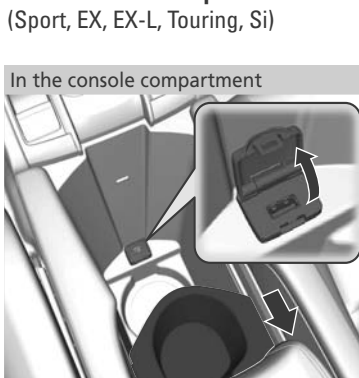
#### MEDIA DEVICE PORTS

Allows connection of your compatible mobile device to your vehicle. Functions range from playing media, charging devices and connecting to available Apple CarPlay® or Android Auto™.

##### Front Console (All)



##### Center Console Compartment (Sport, EX, EX-L, Touring, Si)



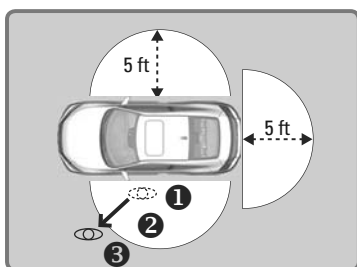
USB Ports	Front Console		Center Console
	1.5A	1.0A	1.0A
Color Audio (LX)		•	
Display Audio (Sport, EX, EX-L, Touring, Si)	•		•
Functions	Quick Charging	Charging	Charging
	Play Audio		
	Android Auto™ Apple CarPlay®	Play Audio	Play Audio

#### WALK AWAY AUTO LOCK®

(Sport, EX, EX-L, Touring, Si)

Automatically locks vehicle when you walk away while carrying the remote transmitter. Especially useful when your hands are full or if you accidentally forget to lock your vehicle.

**The fuel-fill door auto locks** as well, so ensure the vehicle is unlocked before you begin refueling.



#### Follow the steps in the diagram:

- Exit vehicle, close all doors and trunk, then stay close and listen for a beep indicating the system is activated.
- Walk at least 5 feet away.
- Listen for a beep and look for the lights to flash which confirms the doors are locked.

**Note: You may experience interference due to proximity of mobile device**

#### AUDIO SYSTEM CONTROLS

Your vehicle comes with one of two great-sounding audio systems.

##### Color Audio / Display Audio (All models)



- Info button:** Press to switch display.
- + / - bar:** Press the ends of the bar to adjust audio volume.
- ▲ / ▼ buttons:** Press to cycle through audio modes.

#### ELECTRIC PARKING BRAKE

Use the parking brake to keep the vehicle stationary when parked. When the parking brake is applied, you can manually or automatically release it.



##### To Apply:

- Pull the electric parking brake switch up.
- The indicator in the switch comes on.
- The parking brake and brake system indicator (red) on the instrument panel comes on.



##### To Release:

- The ignition switch must be ON\* in order to release the electric parking brake.
- Depress the brake pedal.
- Press the electric parking brake switch.
- The indicator in the switch goes off.
- The parking brake and brake system indicator (red) on the instrument panel goes off.

\*Models with the smart entry system have an ENGINE START/STOP button instead of an ignition switch.

#### TIRE PRESSURE MONITORING SYSTEM (TPMS) CALIBRATION

The TPMS determines if one or more tires are significantly under-inflated. This will cause the low tire pressure/TPMS indicator to come on and a message to appear on the driver information interface.

You must start TPMS calibration every time you adjust the pressure in one or more tires, rotate the tires, or replace one or more tires. Before calibrating the TPMS, set the cold tire pressure in all four tires.

- Make sure vehicle is at a complete stop.
- Make sure shift lever is in N for manual transmission models and P for continuously variable transmission models.
- Make sure ignition switch is ON. (Models with Smart Entry have an **ENGINE START/STOP** button instead of an ignition switch.)

##### Models with Color Audio (LX):

- Press the **Info** button, then **◀/▶** buttons to select **Vehicle Settings** and press the **ENTER** button. **TPMS Calibration** appears on the display.
- Press the **ENTER** button.
- Press the **▲/▼** buttons and select **Calibrate**, then press the **ENTER** button. **Calibration Started** screen appears, then returns to menu screen.

The calibration process finishes automatically.

##### Models with Display Audio (Sport, EX, EX-L, Touring, Si):

- Press the **Home** button.
  - Select **Settings**.
  - Select **Vehicle**.
  - Select **TPMS Calibration**.
  - Select **Calibrate**.
- The calibration process finishes automatically.