

	Smart Entry	Walk Away Auto Lock®	Bluetooth® HandsFreeLink®	Media Device Ports	Audio Systems	SiriusXM® Radio	Adaptive Cruise Control	Lane Keep Assist System	Forward Collision Warning	Road Departure Mitigation	Power Tailgate
Hybrid-LX	•		•	•	Color Audio		•	•	•	•	
Hybrid-EX	•	•	•	•	Display Audio	•	•	•	•	•	
Hybrid-EX-L	•	•	•	•	Display Audio	•	•	•	•	•	•
Hybrid-Touring	•	•	•	•	Display Audio	•	•	•	•	•	Plus Hands-Free Access

Let's personalize your vehicle.

Your vehicle has many customized settings. Refer to your Owner's Guide or Owner's Manual to see them in more detail.

AUTO DOOR LOCK: When do the doors automatically lock? (All models)

- ☐ With Vehicle Speed Doors and tailgate lock when vehicle speed reaches approximately 10 mph.
- ☐ Shift from P Doors and tailgate lock when shift lever is moved out of Park (P).
- ☐ OFF Auto door lock function deactivated.

AUTO DOOR UNLOCK: When do the doors automatically unlock? (All models)

- ☐ All Doors When Driver's Door Opens Doors and tailgate unlock when driver's door is opened.
- ☐ All Doors When Shifted to Park Doors and tailgate unlock when shift lever is moved to Park (P) with brake pedal depressed.
- ☐ All Doors When Ignition Switched Off Doors and tailgate unlock when power mode is set to VEHICLE OFF (LOCK).
- ☐ OFF Auto door-unlock function deactivated.

KEY AND REMOTE UNLOCK MODE SETTINGS: Which doors unlock on first push of the remote? (All models)

- ☐ Driver Door ☐ All Doors

REMOTE TRANSMITTER SETTINGS: Store a separate driver's seat setting (except for power lumbar) into each of the two Remote Transmitters. The seat automatically adjusts when the vehicle is turned on. (Hybrid-EX-L, Hybrid-Touring)

- ☐ Program Transmitter 1 ☐ Program Transmitter 2

DOOR UNLOCK MODE: Changes which doors unlock when you grab the driver's door handle. (All models)

- ☐ Driver Door Only ☐ All Doors

WALK AWAY AUTO LOCK®: Select whether the vehicle automatically locks when you walk away with the smart entry remote. (Hybrid-EX, Hybrid-EX-L, Hybrid-Touring)

- ☐ ON ☐ OFF

RADIO PRESETS: Show the customer how to store a station.

1. Use the TUNE, SEEK or SCAN function to tune to a desired station or channel.
2. Pick a preset number button (1-6 or 7-12, as appropriate).
3. Press and hold the button until you hear a beep.

ADAPTIVE CRUISE CONTROL (ACC) FORWARD VEHICLE DETECT BEEP: Select whether the ACC system beeps when it detects a vehicle or when a detected vehicle goes out of ACC range. (All models) Video available at hondatechtutor.com

- ☐ ON ☐ OFF

LANE KEEPING ASSIST SYSTEM (LKAS) SUSPEND BEEP: Select whether the system beeps when the LKAS is suspended. (All models) Video available at hondatechtutor.com

- ☐ ON A beep confirms each time the system suspends (does not detect lane markings).
- ☐ OFF The system remains silent when it no longer detects lane markings.

FORWARD COLLISION WARNING DISTANCE: Change the distance at which Collision Mitigation Braking System™ alerts. (All models) Video available at hondatechtutor.com

- ☐ LONG ☐ NORMAL ☐ SHORT

ROAD DEPARTURE MITIGATION (RDM) SETTING: Change the setting for the RDM system. (All models) Video available at hondatechtutor.com

- ☐ NARROW ☐ NORMAL ☐ WIDE ☐ WARNING ONLY

☐ AUDIO CONTROLS: Show customer how to use the steering wheel and in-dash audio controls

☐ COMPATIBLE PHONE PAIRED: Show customer how to pair compatible phone.

☐ APPLE CARPLAY® / ANDROID AUTO™ (Hybrid-EX, Hybrid-EX-L, Hybrid-Touring): Offer to plug customer's USB cable into the port and show how to activate. To help prevent any potential issues, be sure to use an Apple MFi Certified Lightning Connector for Apple Carplay®, and for Android Auto™, the USB cables should be certified by USB-IF to be compliant with USB 2.0 Standard.

☐ REMOTE TRANSMITTER: Explain to customer they may experience interference due to proximity of mobile device to remote transmitter

Note: SiriusXM® Radio will not function in Alaska, Puerto Rico or Hawaii.

AM _____
FM _____
SXM _____

FOR MORE INFORMATION

Owner's Guide located in glove box
Owner's Manual + Navigation Manual on website: owners.honda.com

Honda how-to videos available at: hondatechtutor.com
For frequently asked questions, try our Virtual Chat: <https://hondaweb.com/a2q/chat/?psw>

Honda Customer Service: 1-800-999-1009

[Twitter.com/HondaCustSvc](https://twitter.com/HondaCustSvc)

Technology Support: 1-888-528-7876



HondaLink® (Hybrid-EX, Hybrid-EX-L, Hybrid-Touring) Honda app which provides access to your vehicle's information. For more information, visit hondalink.com

Customer's Name: _____ Initials: _____ VIN#: _____

Sales Consultant/Delivery Specialist: _____ Initials: _____ Date: _____

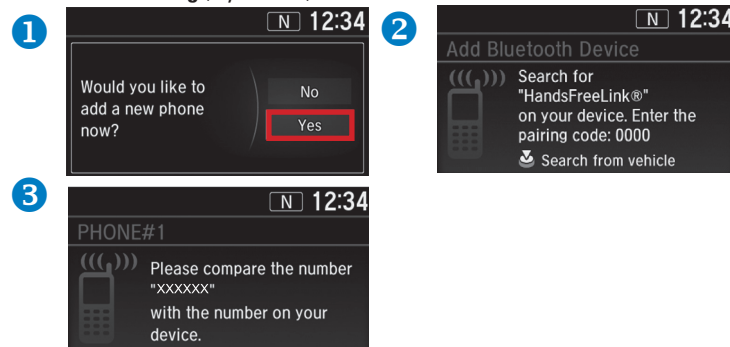
The information herein is believed to be accurate at time of printing. It is offered without warranty or assumption of responsibility by American Honda Motor Co., Inc.

Getting Started: Basic Features and Functions

BLUETOOTH® HANDSFREELINK® AND VOICE COMMAND SYSTEM

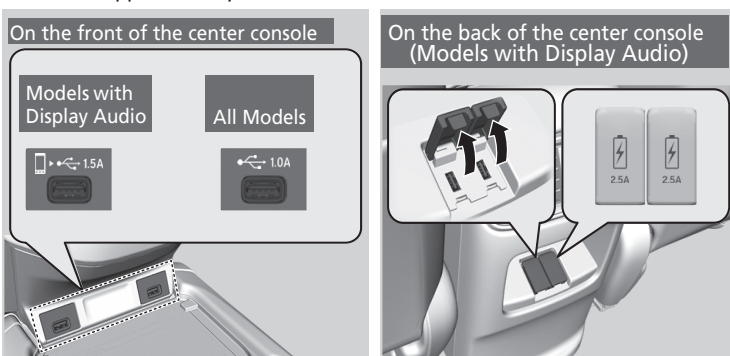
Wirelessly connects your compatible cell phone to the vehicle's audio system, allowing for hands-free phone call operation. Turn on your phone's *Bluetooth* and make sure it's in discovery mode. The vehicle must be stopped during the entire pairing process.

Color Audio Pairing (Hybrid-LX) – Press Phone Button



MEDIA DEVICE PORTS

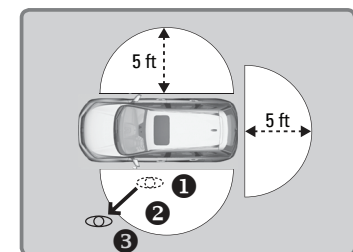
Allows connection of your compatible mobile device to your vehicle. Functions range from playing media, charging devices and connecting to available Apple CarPlay® or Android Auto™.



Center Console USB Ports	In the Console Compartment		Rear Passenger Area
	1.5A	1.0A	2.5A
Color Audio (Hybrid-LX)		•	
Display Audio (Hybrid-EX, Hybrid-EX-L, Hybrid-Touring)	•	•	•
Functionality	Quick Charging	Charging	High-speed Charging Only
	Play Audio		
	Android Auto™ Apple CarPlay®	Play Audio	

WALK AWAY AUTO LOCK® (Hybrid-EX, Hybrid-EX-L, Hybrid-Touring)

Automatically locks vehicle when you walk away while carrying the remote transmitter. Especially useful when your hands are full or if you accidentally forget to lock your vehicle.



If you hear multiple beeps in quick succession, this is an indication that the auto lock function did not activate. Check the following:

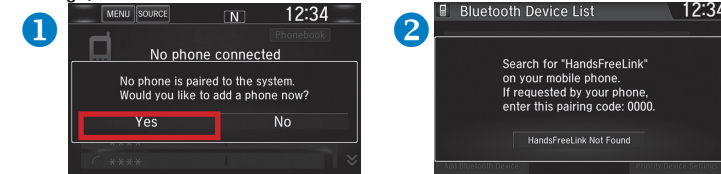
1. Make sure the smart entry remote is not in the vehicle.
2. All doors and tailgate must be completely closed prior to walking away.

Note: You may experience interference due to proximity of mobile device.

ACOUSTIC VEHICLE ALERTING SYSTEM

Alerts pedestrians when the vehicle transmission is in a position other than **P** (Park) and is traveling at speeds of 22 mph or less.

Display Audio Pairing (Hybrid-EX, Hybrid-EX-L, Hybrid-Touring) – Press Settings, then Phone



AUDIO REMOTE CONTROLS

Allow you to operate the audio system while driving.



- **▲ / ▼ buttons:** Cycle through available audio modes.
- **+ / - bar:** Press the ends of the bar to adjust audio volume.

POWER TAILGATE (Hybrid-EX-L, Hybrid-Touring): While carrying remote transmitter

Stop and Hold (to prevent from opening all the way):

After starting opening sequence, simply stop the tailgate in the desired position by pressing the Remote Transmitter tailgate button. It will hold until closing sequence is started.

Opening Height Setting (to set a desired opening height):

As tailgate is opening, stop it near the desired height by pressing the Remote Transmitter or INNER BUTTON on the tailgate once. Then manually adjust the tailgate to the desired height. Press and hold the INNER BUTTON until you hear a double-beep to confirm the new height is set.



HANDS-FREE ACCESS POWER TAILGATE (Hybrid-Touring)

Use a forward and back kicking motion under the center of the rear bumper to open or close the power tailgate while carrying the remote transmitter.

For best results:

- Do not stand too close to the bumper (approximately 2 feet away) when performing the kicking motion.
 - The kicking motion should be performed in a quick, fluid motion (approximately 1 second in duration).
- If you hold your foot under the bumper for too long, the power tailgate does not open or close.



- The sensor **will not read** a side-to-side swiping/waving motion.

A beep sounds and exterior lights flash **after** the kicking motion has been performed properly as confirmation that the hands-free access has been activated.

Video available at hondatechtutor.com

DECELERATION PADDLE SELECTORS

Allow you to sequentially shift through four stages of deceleration to control regenerative braking and increase overall driving range.

To select the different stages of deceleration:

1. Pull back the right side paddle selector for less deceleration.
2. Pull back the left side paddle selector for greater deceleration.

Pull the right side paddle selector for a few seconds when you want to cancel the deceleration paddle selector.

Caution: Be careful not to decelerate too quickly. Rapid deceleration can cause the tires to skid, resulting in loss of control of the vehicle.

