

	Smart Entry	Walk Away Auto Lock®	Bluetooth® HandsFreeLink®	Apple CarPlay® / Android Auto™	Audio Systems	SiriusXM® Radio	Adaptive Cruise Control	Lane Keep Assist System	Forward Collision Warning	Road Departure Mitigation
LX			•		Color Audio		•	•	•	•
Sport 1.5T			•	•	Display Audio		•	•	•	•
EX, EX-L, Sport 2.0T	•	•	•	•	Display Audio	•	•	•	•	•
Touring	•	•	•	•	Display Audio	•	•	•	•	•

Let's personalize your vehicle

Your vehicle has many customizable settings. Refer to your Owner's Guide or Owner's Manual to see them in more detail.

AUTO DOOR LOCK: When do the doors automatically lock? (All models)

- ☐ With Vehicle Speed Doors and trunk lock when vehicle speed reaches approximately 10mph.
- ☐ Shifting From Park (Continuously Variable Transmission models only) Doors and trunk lock when shift lever is moved out of Park (P).
- ☐ OFF Auto door lock function deactivated.

AUTO DOOR UNLOCK: When do the doors automatically unlock? (All models)

- ☐ When Driver's Door Opens All doors and trunk unlock when driver's door is opened.
- ☐ When Shifted to Park (Continuously Variable Transmission models only) All doors and trunk unlock when shift lever is moved to Park (P).
- ☐ When Ignition Switched Off All doors and trunk unlock when power mode is set to VEHICLE OFF.
- ☐ OFF Auto door-unlock function deactivated.

KEY AND REMOTE UNLOCK MODE SETTINGS: Which doors unlock on first push of the remote? (All models)

- ☐ Driver Door Only ☐ All Doors

DOOR UNLOCK MODE: Changes which doors unlock when you grab the driver's door handle. (EX, EX-L, Sport 2.0T, Touring)

- ☐ Driver Door Only ☐ All Doors

WALK AWAY AUTO LOCK®: Select whether the vehicle automatically locks when you walk away with the keyless access remote. (EX, EX-L, Sport 2.0T, Touring)

- ☐ ON ☐ OFF

RADIO PRESETS: Show the customer how to store a station.

1. Use the TUNE, SEEK or SCAN function to tune to a desired station or channel.
2. Pick a preset number button (1-6 or 7-12, as appropriate).
3. Press and hold the button until you hear a beep.

AM

ADAPTIVE CRUISE CONTROL (ACC) FORWARD VEHICLE DETECT BEEP: Select whether the ACC system beeps when it detects a vehicle or when a detected vehicle goes out of ACC range. (All models) Video available at hondatechtutor.com

- ☐ ON ☐ OFF

LANE KEEPING ASSIST SYSTEM (LKAS) SUSPEND BEEP: Select whether the system beeps when the LKAS is suspended. (All models) Video available at hondatechtutor.com

- ☐ ON A beep confirms each time the system suspends (does not detect lane markings). ☐ OFF The system remains silent when it no longer detects lane markings.

FORWARD COLLISION WARNING DISTANCE: Change the distance at which Collision Mitigation Braking System™ alerts. (All models) Video available at hondatechtutor.com

- ☐ LONG ☐ NORMAL ☐ SHORT

ROAD DEPARTURE MITIGATION (RDM) SETTING: Change the setting for the RDM system. (All models) Video available at hondatechtutor.com

- ☐ NARROW ☐ NORMAL ☐ WIDE ☐ WARNING ONLY

AUDIO CONTROLS: Show customer how to use the steering wheel and in-dash audio controls

- ☐ APPLE CARPLAY® / ANDROID AUTO™ (EX, EX-L, Sport 1.5T, Sport 2.0T, Touring): Offer to plug customer's USB cable into the port and show how to activate. To help prevent any potential issues, be sure to use an Apple MFi Certified Lightning Connector for Apple Carplay®, and for Android Auto™, the USB cables should be certified by USB-IF to be compliant with USB 2.0 Standard.

COMPATIBLE PHONE PAIRED: Show customer how to pair compatible phone

- ☐ REMOTE TRANSMITTER: Explain to customer they may experience interference due to proximity of mobile device to remote transmitter

Note: SiriusXM® Radio will not function in Alaska, Puerto Rico or Hawaii.

FM

FM

SXM

SXM

FOR MORE INFORMATION

Owner's Guide located in glove box

Owner's Manual + Navigation Manual on website: owners.honda.com

Honda how-to videos available at: hondatechtutor.com

For frequently asked questions, try our Virtual Chat: <https://hondaweb.com/a2q/chat/?psw>

Honda Customer Service: 1-800-999-1009

[Twitter.com/HondaCustSvc](https://twitter.com/HondaCustSvc)

Technology Support: 1-888-528-7876



HondaLink® (Touring) Honda app which provides access to your vehicle's information. For more information, visit hondalink.com

Customer's Name: _____ Initials: _____ VIN#: _____

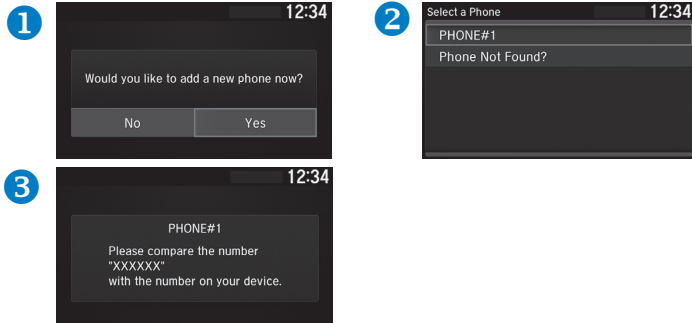
Sales Consultant/Delivery Specialist: _____ Initials: _____ Date: _____

Getting Started: Basic Features and Functions

BLUETOOTH® HANDSFREELINK® PAIRING

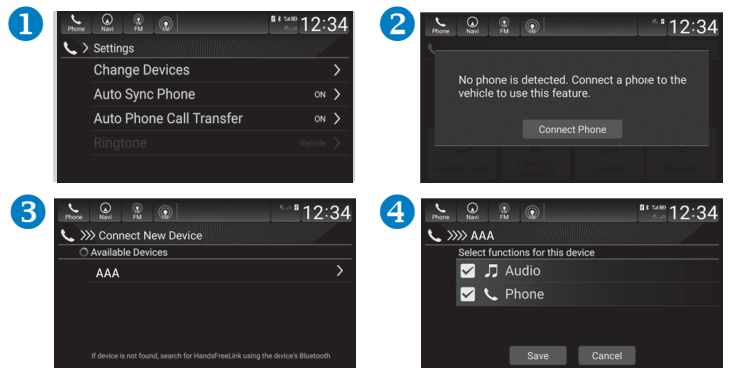
Wirelessly connects your compatible cell phone to the vehicle's audio system, allowing for hands-free phone call operation. Turn on your phone's *Bluetooth®* and make sure it's in discovery mode. The vehicle must be stopped during the entire pairing process.

Color Audio Pairing (LX) – Press Phone Button



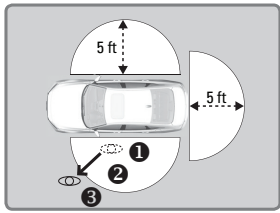
Display Audio Pairing (EX, EX-L, Sport 1.5T, Sport 2.0T, Touring)

– Press Phone, then Connect Phone



WALK AWAY AUTO LOCK® (EX, EX-L, Sport 2.0T, Touring)

Automatically locks vehicle when you walk away while carrying the remote transmitter. Especially useful when your hands are full or if you accidentally forget to lock your vehicle. **The fuel-fill door auto-locks** as well, so ensure the vehicle is unlocked before you begin refueling.



Follow the steps in the diagram:

1. Exit vehicle, close all doors and trunk, then stay close and listen for a beep indicating the system is activated.
2. Walk at least 5 feet away.
3. Listen for a beep and look for the lights to flash which confirms the doors are locked.

If you hear multiple beeps in quick succession, this is an indication that the auto lock function did not activate. Check the following:

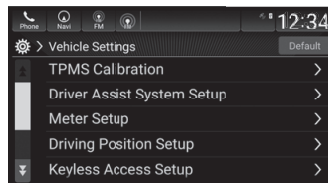
1. Make sure the smart entry remote is not in the vehicle.
2. All doors and trunk must be completely closed prior to walking away.

Note: You may experience interference due to proximity of mobile device.

TIRE PRESSURE MONITORING SYSTEM (TPMS) CALIBRATION

If tire pressure drops significantly, the indicator light (⚠️) comes on and a message appears. Stop your vehicle in a safe place. Check and adjust tire pressure to the level noted on the driver's doorjamb. Complete the steps below.

1. For models with **Color Audio (LX)**, use the selector knob and audio information screen. Press MENU/CLOCK. For models with **Display Audio (EX, EX-L, Sport 1.5T, Sport 2.0T, Touring)**, use the touchscreen and press HOME.



2. Select Settings, then Vehicle Settings
3. Select TPMS Calibration, then Calibrate

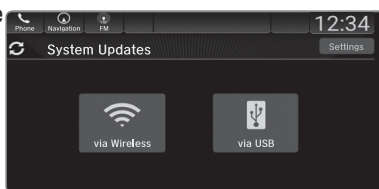
The calibration process requires about 30 minutes of cumulative driving between 30–60 mph.

SYSTEM UPDATES

The Display Audio system (EX, EX-L, Sport 1.5T, Sport 2.0T, Touring) can receive optional software updates through a wireless delivery system when connected to a WiFi network or through the in-vehicle cellular network.

1. Once the wireless connection is established, select System Updates on the audio display HOME screen.
2. Select the via Wireless icon to check for updates. If an update is available, a notification will appear. Select Download Now to prepare the update.
3. Select Install Now, and the update will begin.

Your vehicle is designed to automatically check for software updates when you visit your local Honda dealer. For updating via USB, see your Owner's Manual.



AUDIO SYSTEM CONTROLS

Your vehicle comes with one of two great-sounding audio systems.

Color Audio (LX)



- **SOURCE button:** Cycle through available audio modes.
- **⏮ / ⏭ buttons:** Change presets, tracks, albums, or folders.
- **VOL + / VOL - buttons:** Adjust audio volume.

Display Audio

(EX, EX-L, Sport 1.5T, Sport 2.0T, Touring)

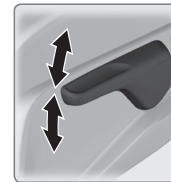


- **⏮ / ⏭ buttons:** Change presets, tracks, albums, or folders.
- **VOL + / VOL - buttons:** Adjust audio volume.
- **BACK button:** Press to go back to the previous command or cancel a command.

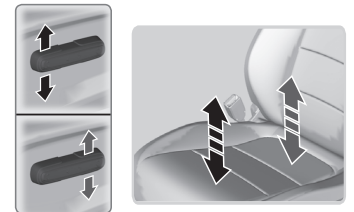
ADJUSTING DRIVER'S SEAT HEIGHT

To adjust Driver's seat height on manual seat (LX):

Pull up or push down the lever to raise or lower the seat.



To adjust Driver's seat height on power seat (EX, EX-L, Sport 1.5T, Sport 2.0T, Touring):



ELECTRIC PARKING BRAKE

Takes the place of a traditional parking brake.



For manual transmission models: The parking brake must be applied to start the engine.

1. Pull up to apply: Pull up the switch. The parking brake indicator appears in the instrument panel. Hold the switch up for emergency braking while moving.

2. Press to release: Hold the brake pedal down and make sure your seat belt is fastened. Press the switch down to release. The parking brake indicator disappears from the instrument panel.

Please ask customer which features they would like to learn about at delivery. Videos available at hondatechtutor.com

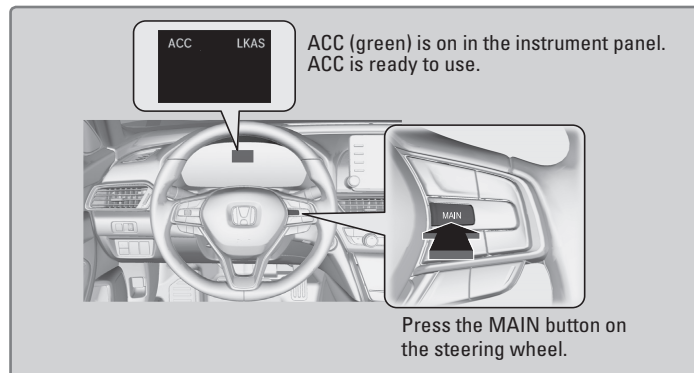
	Honda Sensing® Feature			
	Adaptive Cruise Control	Lane Keeping Assist System	Road Departure Mitigation System	Collision Mitigation Braking System
Manual Transmission	<input type="checkbox"/> Adaptive Cruise Control	<input type="checkbox"/>	<input type="checkbox"/>	<input type="checkbox"/>
Continuously Variable Transmission & Automatic Transmission	<input type="checkbox"/> Adaptive Cruise Control with Low Speed Follow	<input type="checkbox"/>	<input type="checkbox"/>	<input type="checkbox"/>

HONDA SENSING® is a driver support system which employs the use of two distinctly different kinds of sensors, a radar sensor located at the lower part of the front bumper and a front sensor camera mounted to the interior side of the windshield, behind the rear view mirror.

Below are the components of Honda Sensing:

☐ Adaptive Cruise Control (ACC) (for Manual Transmission) and Adaptive Cruise Control with Low Speed Follow (ACC with LSF) (for Continuously Variable Transmission & Automatic Transmission)

Helps maintain a constant vehicle speed and a set following interval behind a vehicle detected ahead of yours. ACC can only be set at speeds of 25 mph or above.



How to activate the system:

Press the **MAIN** button on the steering wheel.

To set the vehicle speed:

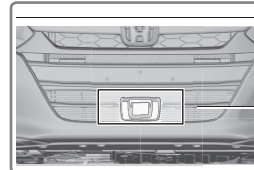
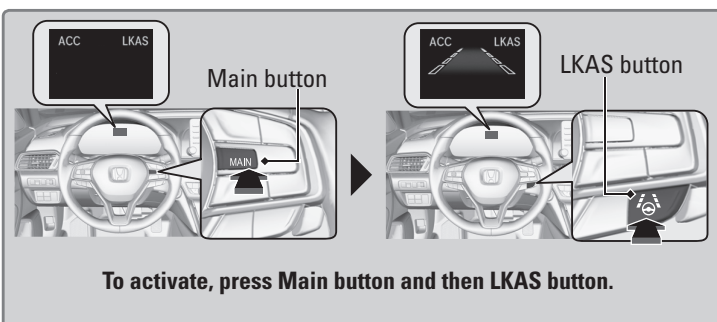
Take your foot off the pedal and press down the **SET/-** button when you reach the desired speed. The moment you release the button, the set speed is fixed, and ACC begins.

To switch ACC to Cruise Control:

Press and hold the (interval) button for one second. **Cruise Mode Selected** appears on the driver information interface for two seconds, and then the mode switches to Cruise.

☐ Lane Keeping Assist System (LKAS)

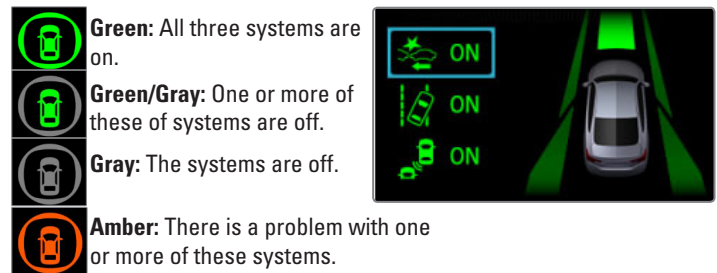
Under certain circumstances, if you cross a detected lane line without using your turn signal, a message appears on the multi-information display and the steering vibrates slightly.



To ensure the radar beam path is not blocked, do not apply paint, stickers, or attach accessories to the front part of the radar sensor or the surrounding area.

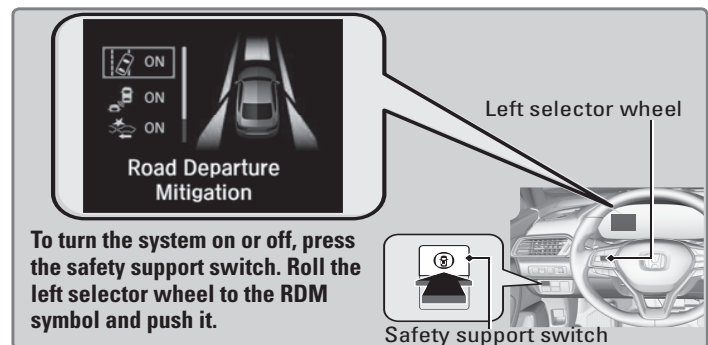
☐ Safety Support

Indicates the state of RDM, CMBS™ and BSI*, such as On, Off, or Failure, by color and letters.



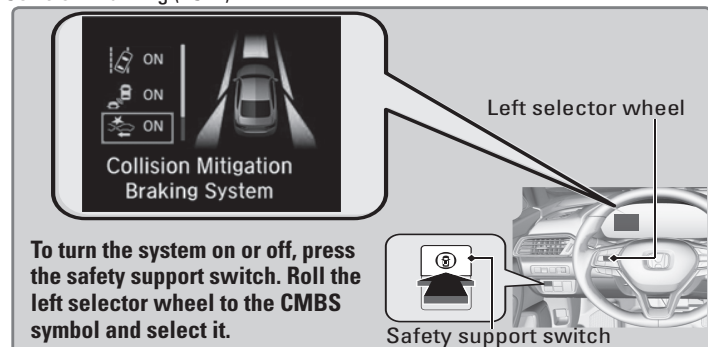
☐ Road Departure Mitigation (RDM)

Under certain circumstances, alerts and helps to assist you if the system determines a possibility of your vehicle unintentionally crossing over detected lane markings. Incorporates Lane Departure Warning (LDW) alert.



☐ Collision Mitigation Braking System™ (CMBS™)

Helps reduce the likelihood of a collision with a vehicle detected ahead and the severity of an impact if the collision is unavoidable. Incorporates Forward Collision Warning (FCW).



* if equipped

Getting Started: HondaLink®

ACCORD

Downloading the HondaLink® app and enrolling will provide you with a wealth of complimentary and subscription services to help make life easier and give you the ability to stay connected, right from your smartphone. Complimentary benefits include service and maintenance scheduling, a Bluetooth® phone-pairing guide for your vehicle, fuel and driving-range details, a monthly vehicle health report and more. HondaLink® offers 3 subscription packages to choose from. Full HondaLink® features apply to Touring model only. Please refer to www.hondalink.com for more detailed information for all models.



HondaLink

Security¹

1-YEAR TRIAL

\$89/YEAR



Automatic Collision Notification

In the event of a collision resulting in airbag deployment, a response agent automatically checks in, and helps send emergency assistance even if no one in the vehicle responds.



Emergency Call

At the push of a button, our trained agents are ready to deliver priority care emergency services while staying connected with you until help arrives.



Enhanced Roadside Assistance

Get live, responsive help with towing and repair services at the touch of a button.



Personal Data Wipe

Easily and remotely reset your navigation system back to its factory state.

Remote¹

3-MONTH TRIAL

\$110/YEAR *



Key by Amazon In-Car Delivery***

Get Amazon packages delivered directly inside your car. Visit amazon.com/keyforcar for more details.



Remote Start²

Enjoy getting into a comfortable car with automatically adjusted climate control.



Remote Lock & Unlock

Whether you're locked out or forgot to lock up, count on quick keyless entry and remote assurance from almost anywhere.



Geofence Alert

Get notified when your car enters or leaves a designated region.



Security Alarm Alert

Receive real-time alerts to your smart phone when your vehicle's factory installed alarm is triggered.



Find My Car

Easily pinpoint your parked car's exact location.



Speed Alert

Specify a speed and be notified when it is exceeded.



Stolen Vehicle Locator³

Provides authorities with assistance in locating your stolen vehicle.



Destination by Voice

Set a destination with your voice and get directions downloaded to your vehicle.

Concierge¹

3-MONTH TRIAL

\$260/YEAR **



Personal Concierge

Enjoy VIP treatment from a knowledgeable specialist who's in tune with what you need for planning a last minute trip, booking a hotel or restaurant reservations, or finding special events near you.

Activate

Complimentary Service Trials

1. Download the HondaLink App.
2. Create an account.
3. Enroll in HondaLink Connected Vehicle Services.

*HondaLink Remote service does not include Security service.

**HondaLink Concierge service includes Remote service.

***Available on select vehicles equipped with an active HondaLink Remote Package. In-car delivery is available only to Amazon Prime members in select U.S. cities and surrounding areas.

HondaLink Services are dependent on an operative connected vehicle device, compatible cellular network availability, navigation map data, and GPS satellite reception, which may limit or restrict service. Features within packages are subject to change at anytime.

Terms of Use of the HondaLink Subscriber Agreement apply. See Terms of Use for complete service limitations.

1. All HondaLink equipped vehicles come with a complimentary trial of Security services for 1 year from the original date of purchase or lease of a new vehicle. A 3-month trial subscription of Remote and Concierge is included if enrolled within 3 months of original purchase date. Enrollment is required to access the Remote and Concierge packages. At the end of each trial period, purchase of a subscription is required to continue the respective services.

2. You are responsible for using all remote features in compliance with any laws, rules or ordinances in effect in your vehicle's location.

3. Stolen vehicle police report is required.

All information contained herein applies to U.S. products only. © 2019 American Honda Motor Co., Inc.