

	Smart Entry	Walk Away Auto Lock®	Bluetooth® HandsFreeLink®	Apple CarPlay™ / Android Auto™	Audio Systems	SiriusXM® Radio	Honda Sensing® Feature	
							Adaptive Cruise Control	Lane Keep Assist
LX			•		Color Audio		•	•
EX	•	•	•	•	Display Audio	•	•	•
Touring	•	•	•	•	Display Audio	•	•	•

**Let's personalize your vehicle**

Your vehicle has many customizable settings. Refer to your Owner's Guide or Owner's Manual to see them in more detail.

**AUTO DOOR LOCK:** *When do the doors automatically lock? (All models)*

<input type="checkbox"/> With Vehicle Speed	Doors and trunk lock when vehicle speed reaches approximately 10mph.
<input type="checkbox"/> Shifting From Park	Doors and trunk lock when shifted out of Park (P).
<input type="checkbox"/> OFF	Auto door lock function deactivated.

**AUTO DOOR UNLOCK:** *When do the doors automatically unlock? (All models)*

<input type="checkbox"/> When Driver's Door Opens	All doors and trunk unlock when driver's door is opened.
<input type="checkbox"/> When Shifted to Park	All doors and trunk unlock when shifted to Park (P).
<input type="checkbox"/> When Ignition Switched Off	All doors and trunk unlock when power mode is set to VEHICLE OFF.
<input type="checkbox"/> OFF	Auto door-unlock function deactivated.

**KEY AND REMOTE UNLOCK MODE SETTINGS:** *Which doors unlock on first push of the remote? (All models)*

<input type="checkbox"/> Driver's Door Only	<input type="checkbox"/> All Doors
---	------------------------------------

**WALK AWAY AUTO LOCK®:** *Select whether the vehicle automatically locks when you walk away with the keyless access remote. (EX, Touring)*

ON  OFF

**RADIO PRESETS:** *Show the customer how to store a station.*

- Use the TUNE, SEEK or SCAN function to tune to a desired station or channel.
- Pick a preset number button (1-6 or 7-12, as appropriate).
- Press and hold the button until you hear a beep.

AM \_\_\_\_\_

**ADAPTIVE CRUISE CONTROL (ACC) FORWARD VEHICLE DETECT BEEP:** *Select whether the ACC system beeps when it detects a vehicle or when a detected vehicle goes out of ACC range. (All models)*  
Video available at [hondatechtutor.com](http://hondatechtutor.com)

ON  OFF

**LANE KEEPING ASSIST SYSTEM (LKAS) SUSPEND BEEP:** *Select whether the system beeps when the LKAS is suspended. (All models)*  
Video available at [hondatechtutor.com](http://hondatechtutor.com)

ON A beep confirms each time the system suspends (does not detect lane markings).  OFF The system remains silent when it no longer detects lane markings.

**FORWARD COLLISION WARNING DISTANCE:** *Change the distance at which Collision Mitigation Braking System™ alerts. (All models)*  
Video available at [hondatechtutor.com](http://hondatechtutor.com)

LONG  NORMAL  SHORT

**ROAD DEPARTURE MITIGATION (RDM) SETTING:** *Change the setting for the RDM system. (All models)* Video available at [hondatechtutor.com](http://hondatechtutor.com)

NARROW  NORMAL  WIDE  WARNING ONLY

**AUDIO CONTROLS:** *Show customer how to use the steering wheel and in-dash audio controls*

**COMPATIBLE PHONE PAIRED:** *Show customer how to pair compatible phone*

**APPLE CARPLAY™ / ANDROID AUTO™** (EX, Touring): *Offer to plug customer's USB cable into the port and show how to activate*

**REMOTE TRANSMITTER:** *Explain to customer they may experience interference due to proximity of mobile device to remote transmitter*

Note: SiriusXM® Radio will not function in Alaska, Puerto Rico or Hawaii.

FM	_____	_____	_____	_____
FM	_____	_____	_____	_____
SXM	_____	_____	_____	_____
SXM	_____	_____	_____	_____

**FOR MORE INFORMATION**  
Visit [owners.honda.com](http://owners.honda.com) and [hondatechtutor.com](http://hondatechtutor.com)

**Honda Customer Service: 1-800-999-1009**  
Monday through Friday: 6:00 AM to 5:00 PM - PT  
[Twitter.com/HondaCustSvc](https://twitter.com/HondaCustSvc)

**Technology Support: 1-888-528-7876**  
Monday through Friday: 6:00 AM to 5:00 PM - PT  
Saturdays: 7:30 AM to 4:00 PM - PT

Owner's Guide located in glove box  
Owner's Manual + Navigation Manual on website: [owners.honda.com](http://owners.honda.com)

For more information on Android Auto™: [android.com/auto/](http://android.com/auto/)  
For more information on Apple CarPlay™: [apple.com/ios/carplay/](http://apple.com/ios/carplay/)



**Honda How to Playlist**  
[hondahowtovideos.com](http://hondahowtovideos.com)  
Videos on how to use various Honda technologies.



**HondaLink® (Touring) Downloadable**  
Honda app which provides access to your vehicle's information through your smartphone. For more information, visit [hondalink.com](http://hondalink.com)

Customer's Name: \_\_\_\_\_ Initials: \_\_\_\_\_ VIN#: \_\_\_\_\_

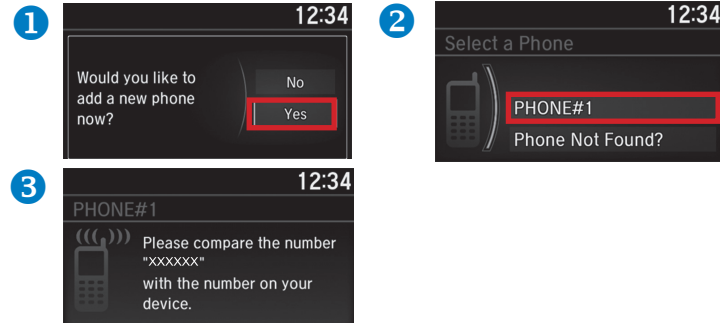
Sales Consultant/Delivery Specialist: \_\_\_\_\_ Initials: \_\_\_\_\_ Date: \_\_\_\_\_

# Getting Started: Basic Features and Functions

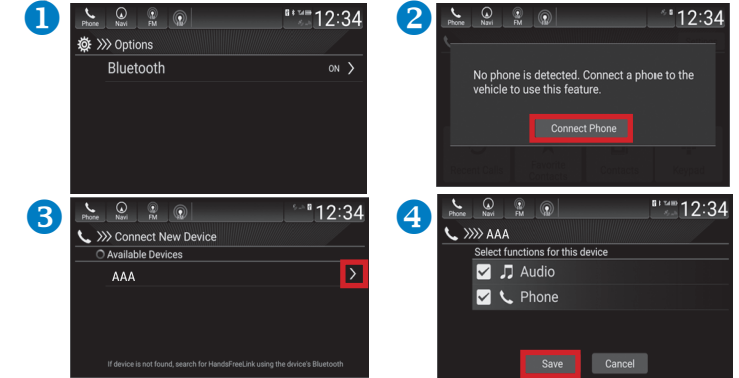
## BLUETOOTH® HANDSFREELINK® PAIRING

Wirelessly connects your compatible cell phone to the vehicle's audio system, allowing for hands-free phone call operation. Turn on your phone's *Bluetooth*® and make sure it's in discovery mode. The vehicle must be stopped during the entire pairing process.

### Color Audio Pairing (LX) – Press Phone Button



### Display Audio Pairing (EX, Touring) – Press Phone, then Connect Phone



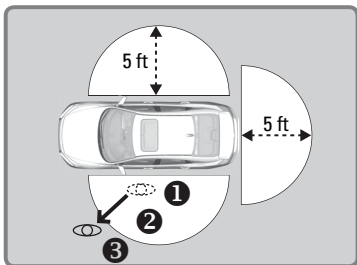
### WALK AWAY AUTO LOCK® (EX, Touring)

Automatically locks vehicle when you walk away while carrying the remote transmitter. Especially useful when your hands are full or if you accidentally forget to lock your vehicle.

The **fuel-fill door auto-locks** as well, so ensure the vehicle is unlocked before you begin refueling.

#### Follow the steps in the diagram:

1. Exit vehicle, close all doors and trunk, then stay close and listen for a beep indicating the system is activated.
2. Walk at least 5 feet away.
3. Listen for a beep and look for the lights to flash which confirms the doors are locked.



**Note:** You may experience interference due to proximity of mobile device

### TIRE PRESSURE MONITORING SYSTEM (TPMS) CALIBRATION

If tire pressure drops significantly, the indicator light (⚠️) comes on and a message appears. Stop your vehicle in a safe place. Check and adjust tire pressure to the level noted on the driver's doorjamb. Complete the steps below.

- For models with **Color Audio (LX)**, use the left selector wheel and audio information screen to select Vehicle Settings; then push the left selector wheel. Select TPMS Calibration, then Calibrate.
- For models with **Display Audio (EX, Touring)**, use the touchscreen and press HOME. Select Settings, then Vehicle. Select TPMS Calibration, then Calibrate.

The calibration process requires about 30 minutes of cumulative driving between 30–60 mph.

### 12-VOLT BATTERY - NEW LOCATION

The 12-volt battery is located **inside** the vehicle under the center console.

- Replacement batteries **must** be purchased at a Honda dealer.
- If your vehicle needs to be jump started, there is a separate terminal under the hood to use solely for this purpose (not for charging). Your vehicle cannot be used to jump start another vehicle. See your Owner's Guide or Owner's Manual for more information on jump starting.

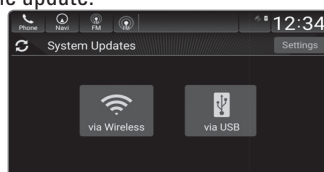
### SYSTEM UPDATES

The Display Audio system (EX, Touring) can receive optional software updates through a wireless delivery system when connected to a WiFi network.

1. Select System Updates on the audio display HOME screen.
2. Select the via Wireless icon. If an update is available, a notification will appear. Select Download Now to prepare the update.
3. Select Install Now, and the update will begin.

Your vehicle is designed to automatically check for software updates when you visit your local Honda dealer or have established a connection to your home WiFi network.

For updating via USB, see the Owner's Manual at [owners.honda.com](http://owners.honda.com).



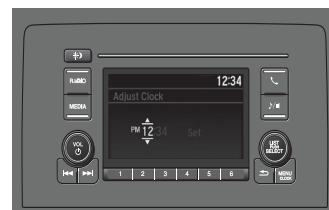
### AUDIO SYSTEM CONTROLS

Your vehicle comes with one of two great-sounding audio systems.

#### Color Audio (LX)



- **SOURCE button:** Cycle through available audio modes.
- **⏪ / ⏩ buttons:** Change presets, tracks, albums, or folders.
- **VOL + / VOL - buttons:** Adjust audio volume.



- **⏪ / ⏩ Seek/Skip**
- **🔊 Volume/Power Knob**
- **\* 🌙 Day/Night Button**

#### Display Audio (EX, Touring)



- **⏪ / ⏩ buttons:** Change presets, tracks, albums, or folders.
- **VOL + / VOL - buttons:** Adjust audio volume.
- **Back button:** Press to go back to the previous command or cancel a command.



- **⏪ / ⏩ Seek/Skip**
- **🔊 Volume/Audio Power**
- **\* 🌙 Day/Night Button**

### DECCELERATION PADDLE SELECTOR

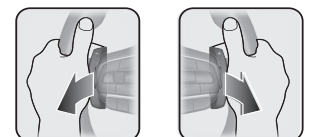
Allows you to sequentially shift through three stages of deceleration.

#### To select the different stages of deceleration:

1. Pull back the right side (+) selector for less deceleration.
2. Pull back the left side (-) selector for greater deceleration.

Pull the right side (+) selector for a few seconds when you want to cancel the deceleration paddle selector.

**Caution:** Be careful not to decelerate too quickly. Rapid deceleration can cause the tires to skid, resulting in loss of control of the vehicle.



– Paddle Selector      + Paddle Selector

