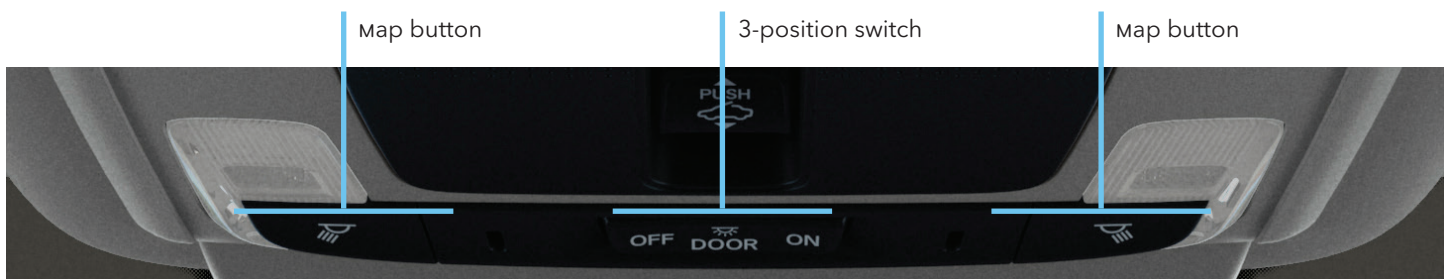


How to Use the Interior Lights

Overhead Lights

There's a 3-position switch in the overhead console that determines how the overhead lights activate:

- ON: In this position, the lights come on whether the doors are open or closed
- DOOR: The interior lights come on when:
 - Any doors are opened
 - The driver's door is unlocked
 - The power mode switch is set to VEHICLE OFF
- OFF: The interior lights stay off regardless of door position



Map Lights

The front and rear map lights are operated independently:

- FRONT: The front map lights are turned on and off by pressing the buttons on either side of the overhead console
- REAR: The rear map lights are turned on and off by just touching anywhere on the light fixture

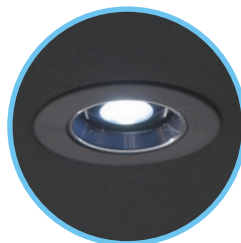
Cargo Area Lights

The cargo lights come on when the tailgate is opened.

Rear map light locations



Rear map light



cargo light locations

